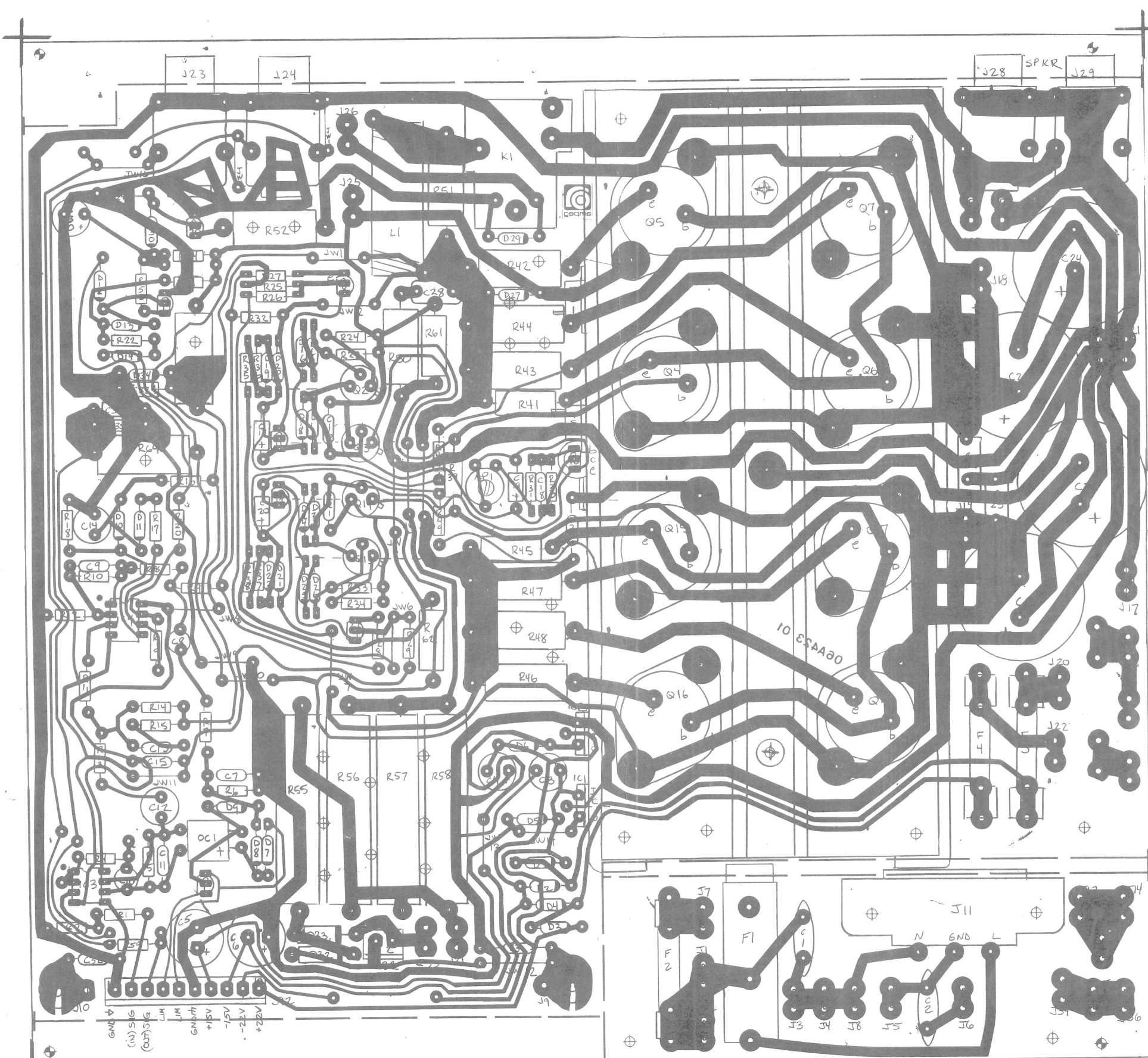


PART	DESC.	P/N
AP1	500 ohm TRIMPOT	71-501-02
C1	.0027uF UL	10-272-01
C2	.0027uF UL	10-272-01
C3	470uF/35V	12-477-35
C4	470uF/35V	12-477-35
C5	1000uF/16V	12-108-12
C6	1000uF/16V	12-108-12
C7	.015uF/50V	10A153-01
C8	22uF/16V NP	12-226-82
C9	15uF/200V	10A150-21
C10	2.2uF/50V NP	12-225-81
C11	100pF/200V	10A101-21
C12	10uF/50V NP	12-106-81
C13	50pF/200V	10A500-21
C14	22/50 NP	12-226-81
C15	.047uF/100V	10A473-11
C16	680pF/200V	10A681-21
C17	1uF/50V	12A105-51
C18	.001uF/100V	10A102-11
C19	1uF/50V	12A105-51
C20	1uF/50V	12A105-51
C21	680pF/200V	10A681-21
C22	.22uF/100V POLY	10-224-03
C23	3300uF/100V	12-338-10
C24	3300uF/100V	12-338-10
C25	.22uF/100V POLY	10-224-03
C26	3300uF/100V	12-338-10
C27	3300uF/100V	12-338-10
C28	1uF/100V POLY	10-104-03
C29	2.2uF/50V	12A225-51
C30	47uF/63V	12-476-62
C31	.047uF/100V	10A473-11
C32	.047uF/100V	10A473-11
C33	10uF/16V	12A106-11
C34	10uF/16V	12A106-11
D1	1N4002	21A402-01
D2	1N4002	21A402-01
D3	1N4002	21A402-01
D4	1N4002	21A402-01
D5	1N4002	21A402-01
D6	1N4002	21A402-01
D7	1N914	21A914-01
D8	1N914	21A914-01
D9	1N914	21A914-01
D10	1N914	21A914-01
D11	1N914	21A914-01
D12	1N914	21A914-01
D13	1N914	21A914-01
D14	1N4747	21A447-01
D15	1N914	21A914-01
D16	1N914	21A914-01
D17	1N3070	21A370-01
D18	1N914	21A914-01
D19	1N3070	21A370-01
D20	1N914	21A914-01
D21	1N914	21A914-01
D22	1N3070	21A370-01
D23	1N3070	21A370-01
D24	1N914	21A914-01
D25	1N914	21A914-01
D26	1N914	21A914-01
D27	1N4002	21A402-01
D28	1N4002	21A402-01
D29	1N914	21A914-01
D30	1N4756	21A456-01
D31	NOT USED	
D32	1N5347	21-547-01
D33	1N5353B	21-553-01
D34	1N4745	21A145-01
D35	1N4745	21A145-01
F1	10A 125V SB FUSE	23-310-02
F2	ABC15A 125V FUSE	23-315-01
F3,F4	.5A 250V SB FUSE	23-300-05
IC1	78H15	37-715-01
IC2	79H15	37-915-01
IC3	TLO-72CP	37-072-01
IC4	NE5532	37-532-01
J1,J2	836TP .25" FST TB	17-836-01
J3,J4	836TP .25" FST TB	17-836-01
J5,J6	836TP .25" FST TB	17-836-01
J7,J8	836TP .25" FST TB	17-836-01
J9,J10	#6 GROUND LUG	17-500-01
J11	AC LINE CONN	17-604-01
J12	10 PIN .156 HDR	17-310-10
J13,J14	836TP .25" FST TB	17-836-01
J15,J16	836TP .25" FST TB	17-836-01
J17,J18	836TP .25" FST TB	17-836-01
J19	836TP .25" FST TB	17-836-01
J20,J21	.187 ST. PC TAB	17-894-01
J22	.187 ST. PC TAB	17-894-01
J23,J24	CLIFF T/S JACK	39-116-01
J25,J26	836TP .25" FST TB	17-836-01
J27	836TP .25" FST TB	17-836-01
J28,J29	CLIFF T/S JACK	39-116-01
J30,J31	836TP .25" FST TB	17-836-01
J31	836TP .25" FST TB	17-836-01
J32	MPSS156-2-D	17-309-02
J33,J34	836TP .25" FST TB	17-836-01
J35,J36	836TP .25" FST TB	17-836-01
K1	T-90 RELAY	82-090-01
L1	2.5uH	94-142-01
OC1	VTL-5C7 VACTROL	66-100-01



PART	DESC.	P/N
Q1	MPS-A-06	96-006-01
Q2	2N5415	96-518-01
Q3	2N3440	96-340-01
Q4	HJ15022	96-122-01
Q5	HJ15022	96-122-01
Q6	HJ15022	96-122-01
Q7	HJ15022	96-122-01
Q8	MPS-A-06	96-006-01
Q9	MPS-A-56	96-056-01
Q10	2N3402	96-342-01
Q11	MPS-A-06	96-006-01
Q12	MPS-A-55	96-055-01
Q13	2N3440	96-340-01
Q14	2N5415	96-515-01
Q15	HJ15023	96-123-01
Q16	HJ15023	96-123-01
Q17	HJ15023	96-123-01
Q18	HJ15023	96-123-01
Q19	MPS-A-06	96-006-01
Q20	MPS-A-06	96-006-01
R1	270	76-271-01
R2	220K	76-224-01
R3	22K	76-224-01
R4	33K	76-333-01
R5	100K	76-104-01
R6	1.5K	76-152-01
R7	22	76-220-01
R8	1.5K	76-152-01
R9	220K	76-224-01
R10	47	76-473-01
R11	4.7K	76-472-01
R12	1.5K	76-152-01
R13	47K	76-473-01
R14	100	76-101-01
R15	220K	76-224-01
R16	18K	76-183-01
R17	15K	76-153-01
R18	15K	76-153-01
R19	15K	76-153-01
R20	1K	76-102-01
R21	39K	76-393-01
R22	18K	76-183-01
R23	680	76-681-01
R24	47	76-470-01
R25	2.7K	76-273-01
R26	4.7K	76-472-01
R27	3.9K	76-392-01
R28	3.9K	76-392-01
R29	2.7K	76-272-01
R30	1.8K	76-182-01
R31	470	76-471-01
R32	22K	76-223-01
R33	680	76-681-01
R34	47	76-470-01
R35	8.2K	76-822-01
R36	39K	76-393-01
R37	39K	76-393-01
R38	8.2K	76-822-01
R39	220 1/2W	77-221-01
R40	330	76-331-01
R41	3.3 1W	78-033-01
R42	.33 5W	78-330-05
R43	.33 5W	78-330-05
R44	.33 5W	78-330-05
R45	3.3 1W	78-033-01
R46	.33 5W	78-330-05
R47	.33 5W	78-330-05
R48	.33 5W	78-330-05
R49	330	76-331-01
R50	10 2W	78-100-01
R51	10 2W	78-100-01
R52	1K 5W	78-102-05
R53	470	76-471-01
R54	15K	76-153-01
R55	330 10W	78-331-10
R56	620 10W	78-621-10
R57	620 10W	78-621-10
R58	620 10W	78-621-10
R59	1K	76-102-01
R60	10K 2W	78-103-02
R61	10K 2W	78-103-02
R62	10K 2W	78-103-02
R63	1.5K 5W	78-152-05
R64	1.5K 5W	78-152-05
TS1	120C THERM SW	88-252-01
TS2	60C NO THERM SW	88-251-01
JW1-17	JUMPER	76-000-05

- 1 POWER AMP PC BD. 06A423-01
- 1 MAIN HEATSINK 33-423-01
- 2 HEATSINK FLANGE 33-423-11
- 4 TO-5 HEATSINK 33-601-01
- 8 TO-3 SIL-PAD 35-003-02
- 2 SHOULDER WASHER 35-043-01
- 2 TO-220 SIL-PAD 35-579-01
- 3 4-40x1/2" SCREW 30-408-52
- 6 6-32x3/8" SCREW 30-638-53
- 19 6-32x9/16" SCREW 30-639-52
- 3 4-40 KEPNUT 30-442-52
- 25 6-32 KEPNUT 30-700-01
- 6 3AG FUSE CLIP 23-926-01
- 1 FUSEHOLDER PC MT 23-345-11
- 1 T90 RELAY COVER 68-602-01

NOTES:
 1) UNLESS OTHERWISE SPECIFIED; ALL RESISTORS ARE IN OHMS, 1/4 WATT, 5%. ALL CAPACITORS ARE IN MICROFARADS AND HAVE A 50 VOLT RATING (MINIMUM).

TOLERANCES UNLESS AS NOTED	REVISIONS	SLM ELECTRONICS	
NO.	DATE	BY	11880 BORMAN DR. ST. LOUIS, MO 63146
DECIMAL	1		
FRACTIONAL	2		
ANGULAR	4		
	8		

AP-3550 PWR AMP

DRAWN BY: ZEM SCALE: 2:1 MATERIAL: 10.5.90

DRAWING NO: 07P423-02

10.8.92 TO 3.11.03