

PART #	DESCRIPTION
D1, D2	1N754
D3, D4	2A146-01
D5-D14	1N914
D15, D16	RED LED
D17, D20	1N437
D18, D19	1N914
D21, D22	2A1754-01
D23, D24	1N914
D25-D28	1N4002
D29, D38	1N914
D30, D41	2A1914-01
D31	RED LED
D32	GREEN LED
D34-D37	YELLOW LED
D39, D40	1N4002
D33	1N5347
D39, D40	1N4007
IC1-IC4	4558
IC5	MN3007
IC6	MN3101
IC7	4558
IC8-IC9	TDA2040

Q1	96-112-01
Q2, Q4	J176
Q3	1N5638
Q5, Q6	MPS455
Q7	MPS406
Q8, Q9	J112
Q10	MPS455
Q11	2N5210
Q12, Q19	MPS406
Q13	2N5210
Q14, Q15	J112
Q16	2N5087
Q17, Q18	J112

P1, P11	100KRA
P2, P3	250KA W/SW.
P4	50KA
P5	70-503-22
P6	250KA
P7	20KA
P8	250KL W/SW.
P9	2KA
P10	10KL W/SW.

J1, J2	1/4" CHROME T/S
J3	39-119-01
J4	39-117-01
J5	39-116-01
J6-J8	1/4" CLIFF T/S
J9-J16	1/4" SP. NOSE
J17, J18	.187 TAB
J19, J20	.187 TAB
J21, J22	.250 TAB
J23-J26	.250 TAB
J27-J34	.250 TAB
J35	550 TAB
J36	17-836-01
J37	17-836-01
J38	17-836-01
J39	17-500-01

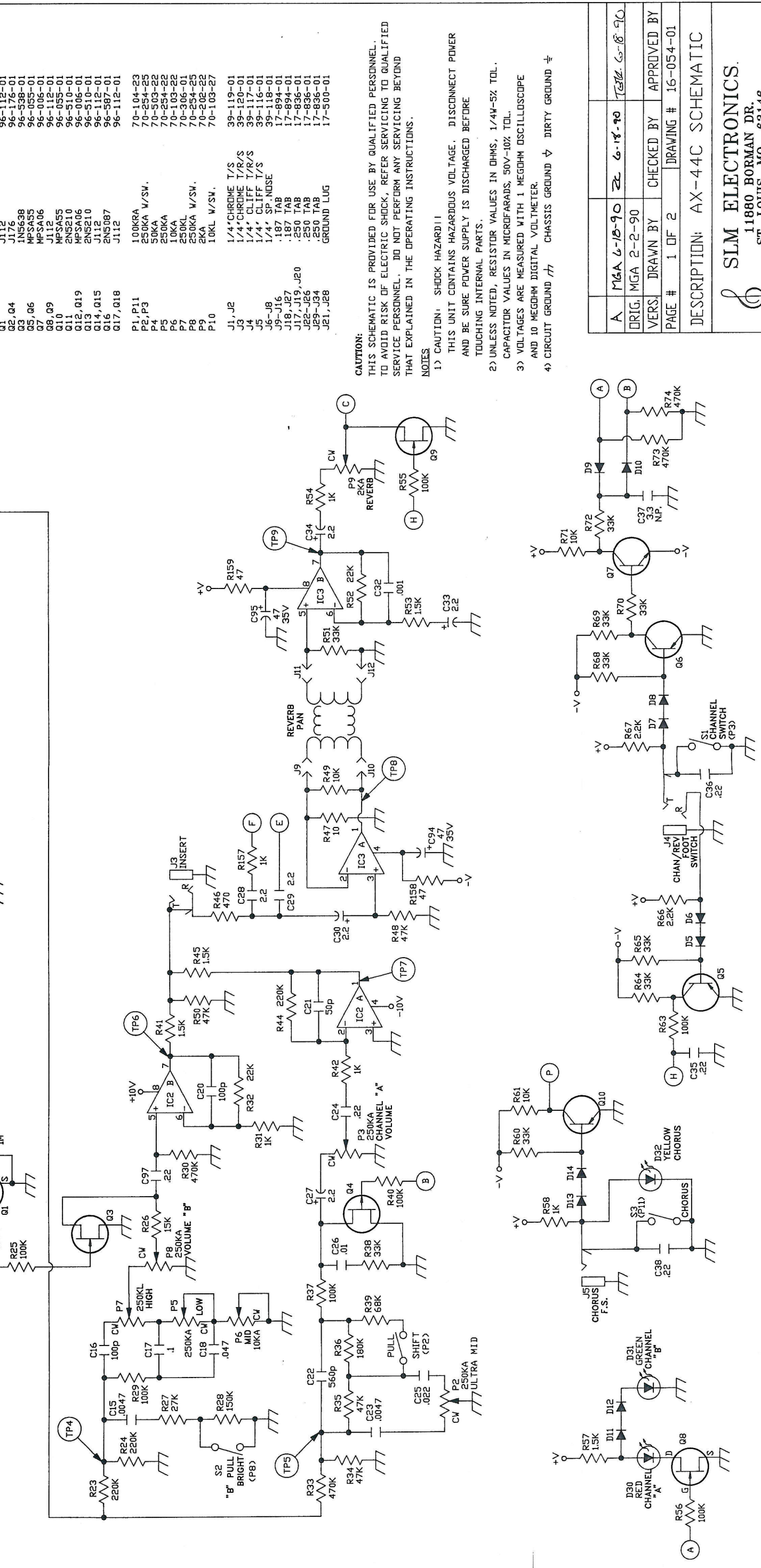
70-104-23	100KRA
70-254-25	250KA W/SW.
70-503-22	50KA
70-254-22	250KA
70-103-22	20KA
70-306-01	250KL W/SW.
70-254-25	250KA
70-202-22	2KA
70-103-27	10KL W/SW.

39-119-01	1/4" CHROME T/S
39-120-01	1/4" CHROME T/S
39-117-01	1/4" CLIFF T/S
39-116-01	1/4" CLIFF T/S
39-118-01	1/4" SP. NOSE
17-894-01	.187 TAB
17-894-01	.187 TAB
17-836-01	.250 TAB
17-836-01	.250 TAB
17-836-01	.250 TAB
17-836-01	.250 TAB
17-836-01	.250 TAB
17-500-01	550 TAB
17-500-01	17-836-01

100KRA	100KRA
250KA W/SW.	250KA W/SW.
50KA	50KA
70-503-22	70-503-22
250KA	250KA
20KA	20KA
250KL W/SW.	250KL W/SW.
2KA	2KA
10KL W/SW.	10KL W/SW.

1/4" CHROME T/S	1/4" CHROME T/S
1/4" CHROME T/S	1/4" CHROME T/S
1/4" CLIFF T/S	1/4" CLIFF T/S
1/4" CLIFF T/S	1/4" CLIFF T/S
1/4" SP. NOSE	1/4" SP. NOSE
.187 TAB	.187 TAB
.187 TAB	.187 TAB
.250 TAB	.250 TAB
.250 TAB	.250 TAB
.250 TAB	.250 TAB
.250 TAB	.250 TAB
.250 TAB	.250 TAB
550 TAB	550 TAB
17-836-01	17-836-01
17-836-01	17-836-01
17-500-01	17-500-01

96-112-01	96-112-01
96-176-01	96-176-01
96-528-01	96-528-01
96-053-01	96-053-01
96-006-01	96-006-01
96-112-01	96-112-01
96-055-01	96-055-01
96-510-01	96-510-01
96-006-01	96-006-01
96-510-01	96-510-01
96-112-01	96-112-01
96-587-01	96-587-01
96-112-01	96-112-01



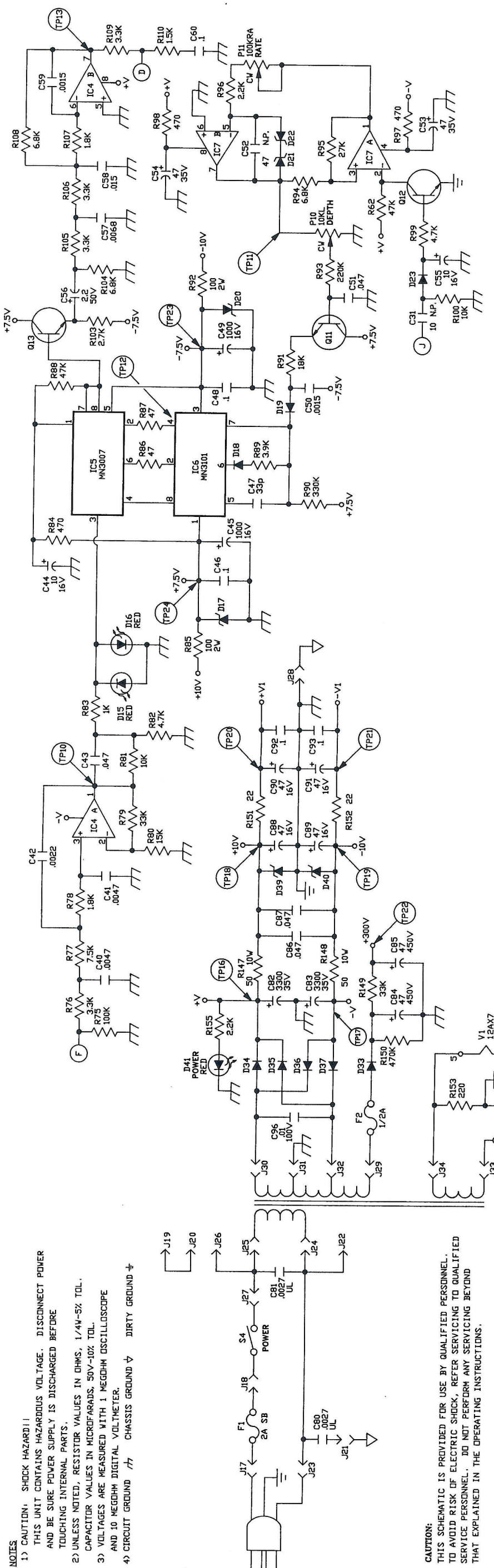
CAUTION:
THIS SCHEMATIC IS PROVIDED FOR USE BY QUALIFIED PERSONNEL.
TO AVOID RISK OF ELECTRIC SHOCK, REFER SERVICING TO QUALIFIED
SERVICE PERSONNEL. DO NOT PERFORM ANY SERVICING BEYOND
THAT EXPLAINED IN THE OPERATING INSTRUCTIONS.

NOTES

- 1) CAUTION! SHOCK HAZARD!!
THIS UNIT CONTAINS HAZARDOUS VOLTAGE. DISCONNECT POWER
AND BE SURE POWER SUPPLY IS DISCHARGED BEFORE
TOUCHING INTERNAL PARTS.
- 2) UNLESS NOTED, RESISTOR VALUES IN OHMS, 1/4W-5% TOL.
CAPACITOR VALUES IN MICROFARADS, 50V-10% TOL.
- 3) VOLTAGES ARE MEASURED WITH 1 MEGOHM OSCILLOSCOPE
AND 10 MEGOHM DIGITAL VOLTMETER.
- 4) CIRCUIT GROUND \uparrow CHASSIS GROUND ∇ DIRTY GROUND \neq

A	MGA 6-15-90	ZL 6-18-90	TELE 6-18-90
DRIG.	MGA 2-2-90		
VERS.	DRAWN BY	CHECKED BY	APPROVED BY
PAGE #	1 OF 2	DRAWING #	16-054-01
DESCRIPTION: AX-44C SCHEMATIC			

SLM ELECTRONICS.
11880 BORMAN DR.
ST. LOUIS, MO 63146

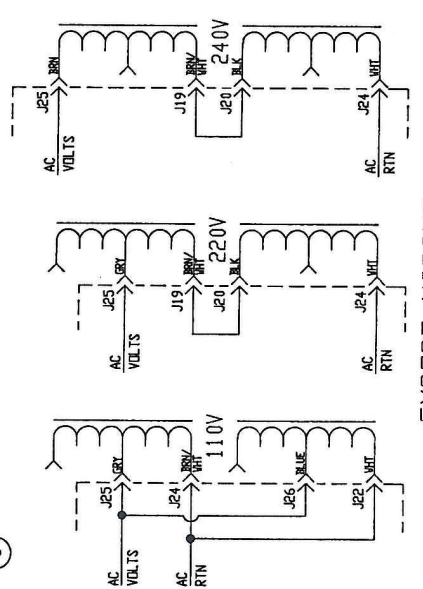
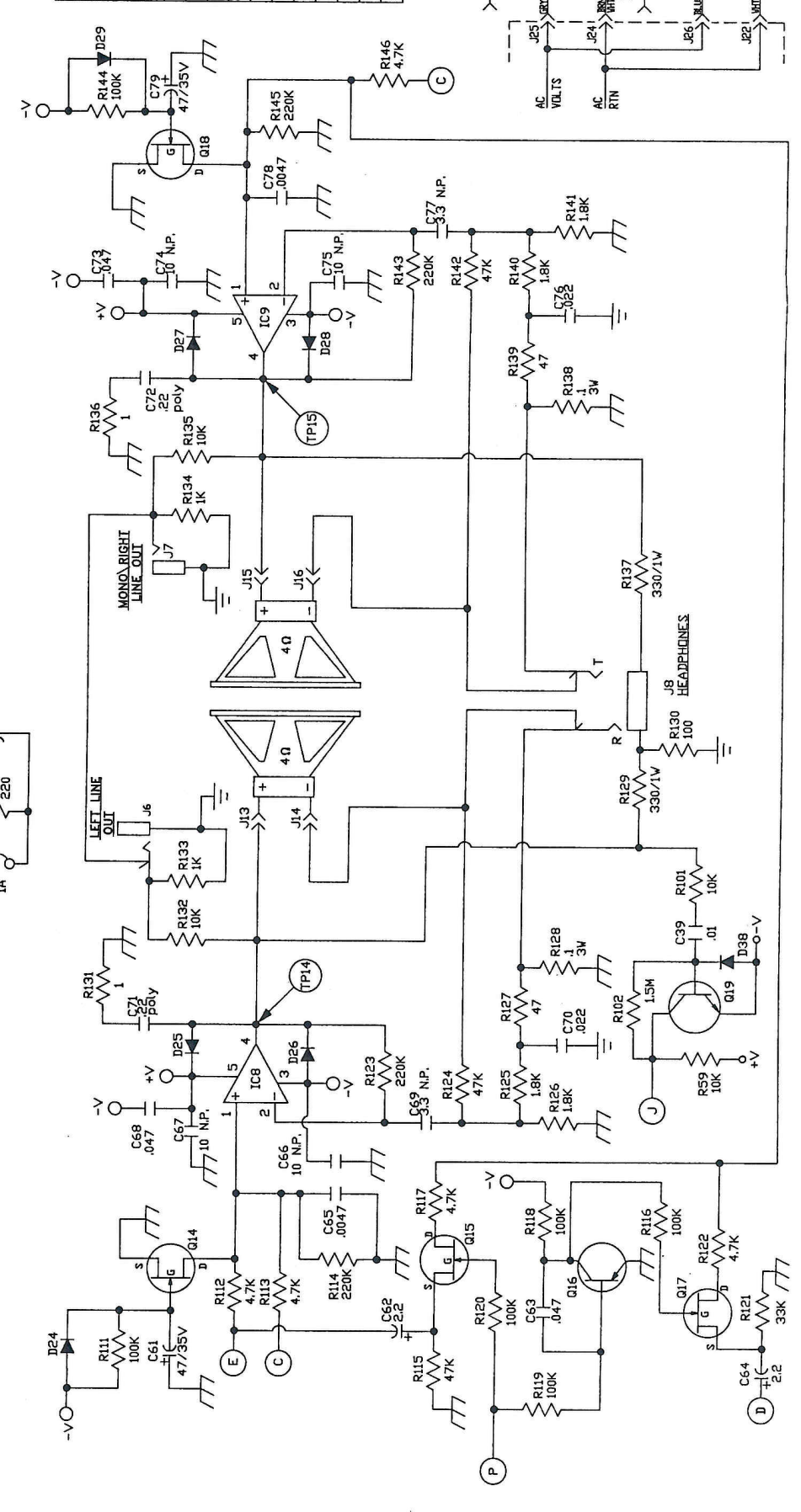


NOTES:
 1) CAUTION, SHOCK HAZARD!! THIS UNIT CONTAINS HAZARDOUS VOLTAGE. DISCONNECT POWER AND BE SURE POWER SUPPLY IS DISCHARGED BEFORE TOUCHING INTERNAL PARTS.
 2) UNLESS NOTED, RESISTOR VALUES IN OHMS, 1/4W-5% TOL.
 3) CAPACITOR VALUES IN MICROFARADS, 50V-10% TOL. AND 10 MEGOHM DIGITAL VOLTMETER.
 4) CIRCUIT GROUND ∇ CHASSIS GROUND ∇ DIRTY GROUND ∇

CAUTION:
 THIS SCHEMATIC IS PROVIDED FOR USE BY QUALIFIED PERSONNEL. TO AVOID RISK OF ELECTRIC SHOCK, REFER SERVICING TO QUALIFIED SERVICE PERSONNEL. DO NOT PERFORM ANY SERVICING BEYOND THAT EXPLAINED IN THE OPERATING INSTRUCTIONS.

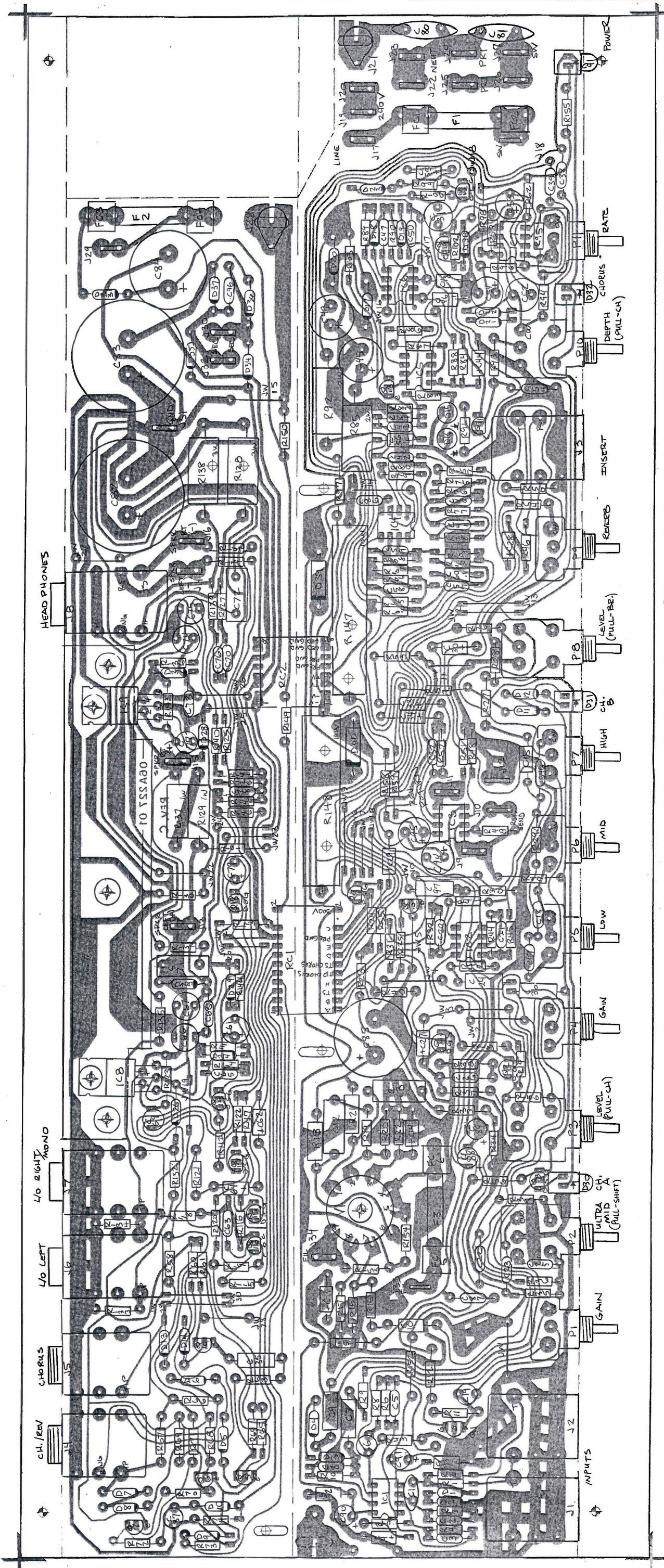
CONDITION 1: CHANNEL B		CONDITION 2: CHANNEL A	
T.P.	WAVE	T.P.	WAVE
1	700mVp-p	1	25mVp-p
2	500mVp-p	2	1Vp-p
3	1.5Vp-p	3	38Vp-p
4	2.7Vp-p	4	20Vp-p
5	1.2Vp-p	5	6Vp-p
6	2Vp-p	6	1.5VDC
7	12Vp-p	7	3.2Vp-p
8	400mVp-p	8	38Vp-p
9	2.2Vp-p	9	500mVp-p
10	6Vp-p	10	850mVp-p
11	15Vp-p	11	9.6 Hz w/RATE @ '10'
12	1.8Vp-p	12	240 KHz w/DEPTH @ '10'
13	23Vp-p	13	3.7Vp-p
14	23Vp-p	14	27Vp-p
15	23Vp-p	15	27Vp-p

*VARIES WITH FREQUENCY



SLM ELECTRONICS.
 11880 BORMAN DR.
 ST. LOUIS, MO 63146

ORIG. MGA 6-18-90
 VERS. MGA 2-2-90
 DRAWN BY: [Signature]
 CHECKED BY: [Signature]
 APPROVED BY: [Signature]
 PAGE # 2 OF 2
 DRAWING # 16-054-01
 DESCRIPTION: AX-4C SCHEMATIC



TOLERANCES		REVISIONS	
UNLESS OTHERWISE SPECIFIED	UNLESS OTHERWISE SPECIFIED	NO.	DATE
DECIMAL	DECIMAL	1	
FRACTIONAL	FRACTIONAL	2	
ANGULAR	ANGULAR	3	
		4	
		5	

AX-44C PICTORIAL ASSY P/N 07-227-01
 SILM ELECTRONICS
 11880 BURMAN DR. ST. LOUIS MO. 63146
 DRAWN BY: SCALE: DATE: MATERIAL:
 CHECKED: DATE: DRAWING NO.:
 PRC JLF 07-227-01

PART	DESCRIPTION	PART #	PART	DESCRIPTION	PART #	PART	DESCRIPTION	PART #
R1	22K	76-223-01	R100	10K	76-103-01	C1	.047 poly	10-473-03
R2	22K	76-223-01	R101	10K	76-103-01	C2	100P	10A101-21
R3	220K	76-224-01	R102	1.5M	76-155-01	C3	.001	10A102-11
R4	7.5K	76-752-01	R103	2.7K	76-272-01	C4	1.0/50	12A105-51
R5	1.5K	76-152-01	R104	6.8K	76-682-01	C5	.1	10A104-01
R6	4.7K	76-472-01	R105	3.3K	76-332-01	C6	2.2 N.P.	12-225-81
R7	47K	76-473-01	R106	3.3K	76-332-01	C7	.1	10A104-01
R8	2.2K	76-222-01	R107	1.8K	76-182-01	C8	470P	10A471-11
R9	270K	76-274-01	R108	6.8K	76-682-01	C9	.22	10A224-01
R10	1M	76-105-01	R109	3.3K	76-332-01	C10	.0022	10A222-01
R11	100K	76-104-01	R110	1.5K	76-152-01	C11	1.0/50	12A105-51
R12	100K	76-104-01	R111	100K	76-104-01	C12	.047 poly 600V	10-473-61
R13	100K	76-104-01	R112	4.7K	76-472-01	C13	.047 poly 600V	10-473-61
R14	2.2M	76-225-01	R113	4.7K	76-472-01	C14	1.0/50	12A105-51
R15	47K	76-473-01	R114	220K	76-224-01	C15	.0047	10A472-01
R16	1M	76-105-01	R115	47K	76-473-01	C16	100P	10A101-21
R17	1.5K	76-152-01	R116	100K	76-104-01	C17	.1	10A104-01
R18	100K 1/2W	77-104-01	R117	4.7K	76-472-01	C18	.047	10A473-11
R19	100K	76-104-01	R118	100K	76-104-01	C19	2.2 N.P.	12-225-81
R20	47K	76-473-01	R119	100K	76-104-01	C20	100P	10A101-21
R21	100K 1/2W	77-104-01	R120	100K	76-104-01	C21	50P	10A500-21
R22	1.5K	76-152-01	R121	100K	76-104-01	C22	560P	10A561-11
R23	220K	76-224-01	R122	33K	76-333-01	C23	.0047	10A472-01
R24	220K	76-224-01	R123	220K	76-224-01	C24	.22	10A224-01
R25	100K	76-104-01	R124	47K	76-473-01	C25	.022	10A223-01
R26	15K	76-153-01	R125	1.8K	76-182-01	C26	.01	10A103-11
R27	27K	76-273-01	R126	1.8K	76-182-01	C27	.22	12A225-51
R28	150K	76-154-01	R127	47	76-470-01	C28	2.2/50	12A225-51
R29	100K	76-104-01	R128	47	76-470-01	C29	2.2/50	12A225-51
R30	470K	76-474-01	R129	330/1M	78-331-01	C30	2.2/50	12A225-51
R31	1K	76-102-01	R130	100	76-101-01	C31	10 N.P.	12-106-81
R32	22K	76-223-01	R131	1	76-010-01	C32	.001	10A102-11
R33	470K	76-474-01	R132	10K	76-103-01	C33	2.2/50	12A225-51
R34	47K	76-473-01	R133	1K	76-102-01	C34	2.2/50	12A225-51
R35	47K	76-473-01	R134	1K	76-102-01	C35	.22	10A224-01
R36	180K	76-184-01	R135	10K	76-102-01	C36	.22	10A224-01
R37	100K	76-104-01	R136	10K	76-102-01	C37	3.3 N.P.	10-335-82
R38	33K	76-333-01	R137	1	76-010-01	C38	.22	10A224-01
R39	68K	76-683-01	R138	330/1M	78-331-01	C39	.01	10A103-11
R40	100K	76-104-01	R139	47	76-470-01	C40	.0047	10A472-01
R41	1.5K	76-152-01	R140	1.8K	76-182-01	C41	.0047	10A472-01
R42	1K	76-102-01	R141	1.8K	76-182-01	C42	.0022	10A473-11
R43	1M	76-105-01	R142	47K	76-473-01	C43	.047	10A473-11
R44	220K	76-224-01	R143	220K	76-224-01	C44	10/16	12A106-11
R45	1.5K	76-152-01	R144	100K	76-104-01	C45	1000/16	12-108-12
R46	470	76-471-01	R145	220K	76-224-01	C46	.1	10A104-01
R47	10	76-100-01	R146	4.7K	76-472-01	C47	33P	10A330-21
R48	47K	76-473-01	R147	50/10W	78-500-10	C48	.1	10A104-01
R49	10K	76-103-01	R148	50/10W	78-500-10	C49	1000/16	12-108-12
R50	47K	76-473-01	R149	33K	76-333-01	C50	.0015	10A152-01
R51	33K	76-333-01	R150	470K	76-470-01	C51	.047	10A473-11
R52	22K	76-223-01	R151	22	76-220-01	C52	47 N.P.	12-476-81
R53	1.5K	76-152-01	R152	22	76-220-01	C53	47/35	12-476-32
R54	1K	76-102-01	R153	220	76-221-01	C54	47/35	12-476-32
R55	100K	76-104-01	R154	220	76-221-01	C55	10/16	12A106-11
R56	100K	76-104-01	R155	2.2K	76-222-01	C56	2.2/50	12A225-51
R57	1.5K	76-152-01	R156	10K	76-102-01	C57	.0048	10A682-01
R58	1K	76-102-01	R157	1K	76-102-01	C58	.015	10A153-01
R59	10K	76-103-01	R158	47	76-470-01	C59	.0015	10A152-01
R60	33K	76-333-01	R159	47	76-470-01	C60	.1	10A104-01
R61	10K	76-103-01				C61	47/35	12-476-32
R62	47K	76-473-01				C62	2.2/50	12A225-51
R63	100K	76-104-01				C63	.047	10A473-11
R64	33K	76-333-01	JW1-30	JUMPER	76-000-05	C64	2.2/50	12A225-51
R65	33K	76-333-01				C65	.0047	10A472-01
R66	2.2K	76-222-01	IC1	4558	37-458-01	C66	10 N.P.	12-106-81
R67	2.2K	76-222-01	IC2	4558	37-458-01	C67	10 N.P.	12-106-81
R68	33K	76-333-01	IC3	4558	37-458-01	C68	.047	10A473-11
R69	33K	76-333-01	IC4	4558	37-458-01	C69	3.3 N.P.	12-335-82
R70	33K	76-333-01	IC5	MNS007	37-307-01	C70	.022	10A223-01
R71	10K	76-103-01	IC6	MNS101	37-301-01	C71	.22 poly	10-224-03
R72	33K	76-333-01	IC7	4558	37-458-01	C72	.22 poly	10-224-03
R73	470K	76-474-01	IC8	TDA2040	37-240-02	C73	.047	10A473-11
R74	470K	76-474-01	IC9	TDA2040	37-240-02	C74	10 N.P.	12-106-81
R75	100K	76-104-01				C75	10 N.P.	12-106-81
R76	3.3K	76-332-01	Q1	J112	96-112-01	C76	.022	10A223-01
R77	7.5K	76-752-01	Q2	J176	96-176-01	C77	3.3 N.P.	12-335-82
R78	1.8K	76-182-01	Q3	MNS638	96-538-01	C78	.0047	10A472-01
R79	33K	76-333-01	Q4	J176	96-176-01	C79	47/35	12-476-32
R80	15K	76-153-01	Q5	MPSA55	96-055-01	C80	.0027 U.L.	10-272-01
R81	10K	76-103-01	Q6	MPSA55	96-055-01	C81	.0027 U.L.	10-272-01
R82	4.7K	76-472-01	Q7	MPSA55	96-055-01	C82	3300/35	12-338-32
R83	1K	76-102-01	Q8	J112	96-112-01	C83	3300/35	12-338-32
R84	470	76-471-01	Q9	J112	96-112-01	C84	47/450	12-476-42
R85	100 2W	78-101-01	Q10	MPSA55	96-055-01	C85	47/450	12-476-42
R86	47	76-470-01	Q11	2NS210	96-510-01	C86	.047	10A473-11
R87	47	76-470-01	Q12	MPSA06	96-006-01	C87	.047	10A473-11
R88	47K	76-473-01	Q13	2NS210	96-510-01	C88	47/16	12-476-12
R89	3.9K	76-392-01	Q14	J112	96-112-01	C89	47/16	12-476-12
R90	330K	76-334-01	Q15	J112	96-112-01	C90	47/16	12-476-12
R91	18K	76-183-01	Q16	2NS087	96-587-01	C91	47/16	12-476-12
R92	100 2W	78-101-01	Q17	J112	96-112-01	C92	.1	10A104-01
R93	220K	76-224-01	Q18	J112	96-112-01	C93	.1	10A104-01
R94	6.8K	76-682-01	Q19	MPSA06	96-006-01	C94	47/35	12-476-32
R95	27K	76-273-01				C95	47/35	12-476-32
R96	2.2K	76-222-01				C96	.01	10A103-11
R97	470	76-471-01				C97	.22	10A224-01
R98	470	76-471-01						
R99	4.7K	76-472-01						

NOTES:

1) UNLESS OTHERWISE SPECIFIED, ALL RESISTORS ARE IN OHMS, 1/4 WATT, 5%. ALL CAPACITORS ARE IN MICROFARADS AND HAVE A 50 VOLT RATING (MINIMUM).

MISC. ITEMS

QTY	DESCRIPTION	PART #
1	2A S.B. FUSE	23-312-01
1	1/2A FUSE	23-300-01
1	1A FUSE	23-301-01
4	FUSE CLIP	23-926-01
2	4-40X1/2" SCREW	30-408-52
2	4-40 NUT	30-442-52
3	6-32X3/8" SCREW	30-638-53
1	6-32X9/16" TFS	30-650-52
3	6-32 NUT	30-700-01
1	SINK	33-113-05
2	NYLON BUSHING	35-043-01
2	INSULATOR	35-579-01
1	SPIN 3" RIBBON	99-124-01
1	12PIN 3" RIBBON	99-124-02
1	9 PIN SOCKET	17-450-09
1	AX-44C P.C.B.	06A227-01

TOLERANCES	REVISIONS	AX-44C PARTS LIST FOR PICTORIAL W/07-227-01		
(EXCEPT AS NOTED)	NO.	DATE	BY	
DECIMAL	1			
FRACTIONAL	2			
ANGULAR	3			
DRAWN BY				SCALE
CHK'D				DATE
YOUNG				DRAWING NO.
PAGE 2 of 2				07-227-01