


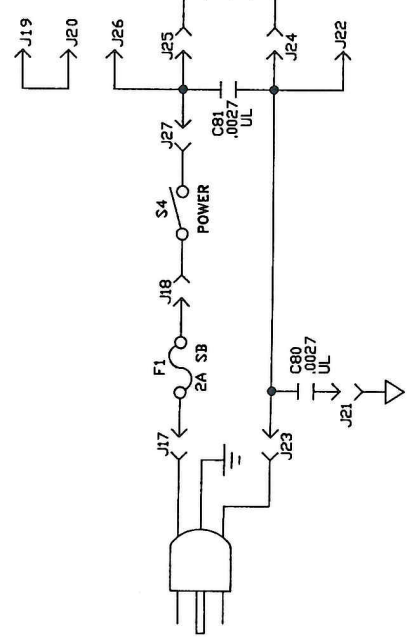
| PART | DESCRIPTION | PART # |
|---------------|-------------------|-----------|
| D1, D2 | 1N754 | 21A754-01 |
| D3, D4 | 1N746 | 21A146-01 |
| D5-D14 | 1N914 | 21A914-01 |
| D15, D16 | RED LED | 21-117-01 |
| D17, D20 | 1N4737 | 21A437-01 |
| D18, D19 | 1N914 | 21A914-01 |
| D21, D22 | 1N754 | 21A754-01 |
| D23, D24 | 1N914 | 21A914-01 |
| D25-D28 | 1N4002 | 21A402-01 |
| D29, D38 | 1N914 | 21A914-01 |
| D30, D41 | RED LED | 21-501-01 |
| D31 | GREEN LED | 21-502-01 |
| D32 | YELLOW LED | 21-503-01 |
| D34-D37 | 1N4002 | 21A402-01 |
| D39, D40 | 1N5347 | 21-547-01 |
| D33 | 1N4007 | 21A407-01 |
| IC1-IC4 | 4558 | 37-458-01 |
| IC5 | MN3007 | 37-307-01 |
| IC6 | MN3101 | 37-301-01 |
| IC7 | 4558 | 37-458-01 |
| IC8-IC9 | TDA2040 | 37-240-02 |
| Q1 | J112 | 96-112-01 |
| Q2, Q4 | J176 | 96-176-01 |
| Q3 | 1N5638 | 96-538-01 |
| Q5, Q6 | MPSA55 | 96-055-01 |
| Q7 | MPSA06 | 96-006-01 |
| Q8, Q9 | J112 | 96-112-01 |
| Q10 | MPSA55 | 96-055-01 |
| Q11 | 2N5210 | 96-510-01 |
| Q12, Q19 | MPSA06 | 96-006-01 |
| Q13 | 2N5210 | 96-510-01 |
| Q14, Q15 | J112 | 96-112-01 |
| Q16 | 2N5087 | 96-587-01 |
| Q17, Q18 | J112 | 96-112-01 |
| P1, P11 | 100KRA | 70-104-23 |
| P2, P3 | 250KA W/SW. | 70-254-25 |
| P4 | 50KA | 70-503-22 |
| P5 | 250KA | 70-254-22 |
| P6 | 10KA | 70-103-22 |
| P7 | 250KL | 70-306-01 |
| P8 | 250KA W/SW. | 70-254-25 |
| P9 | 2KA | 70-202-22 |
| P10 | 10KL W/SW. | 70-103-27 |
| J1, J2 | 1/4" CHROME T/S | 39-119-01 |
| J3 | 1/4" CHROME T/R/S | 39-120-01 |
| J4 | 1/4" CLIFF T/R/S | 39-117-01 |
| J5 | 1/4" CLIFF T/S | 39-116-01 |
| J6-J8 | 1/4" SP. NOISE | 39-118-01 |
| J9-J16 | .187 TAB | 17-894-01 |
| J18, J27 | .187 TAB | 17-894-01 |
| J17, J19, J20 | .250 TAB | 17-836-01 |
| J22-J26 | .250 TAB | 17-836-01 |
| J29-J34 | .250 TAB | 17-836-01 |
| J21, J28 | GROUND LUG | 17-500-01 |

CAUTION:
THIS SCHEMATIC IS PROVIDED FOR USE BY QUALIFIED PERSONNEL. TO AVOID RISK OF ELECTRIC SHOCK, REFER SERVICING TO QUALIFIED SERVICE PERSONNEL. DO NOT PERFORM ANY SERVICING BEYOND THAT EXPLAINED IN THE OPERATING INSTRUCTIONS.

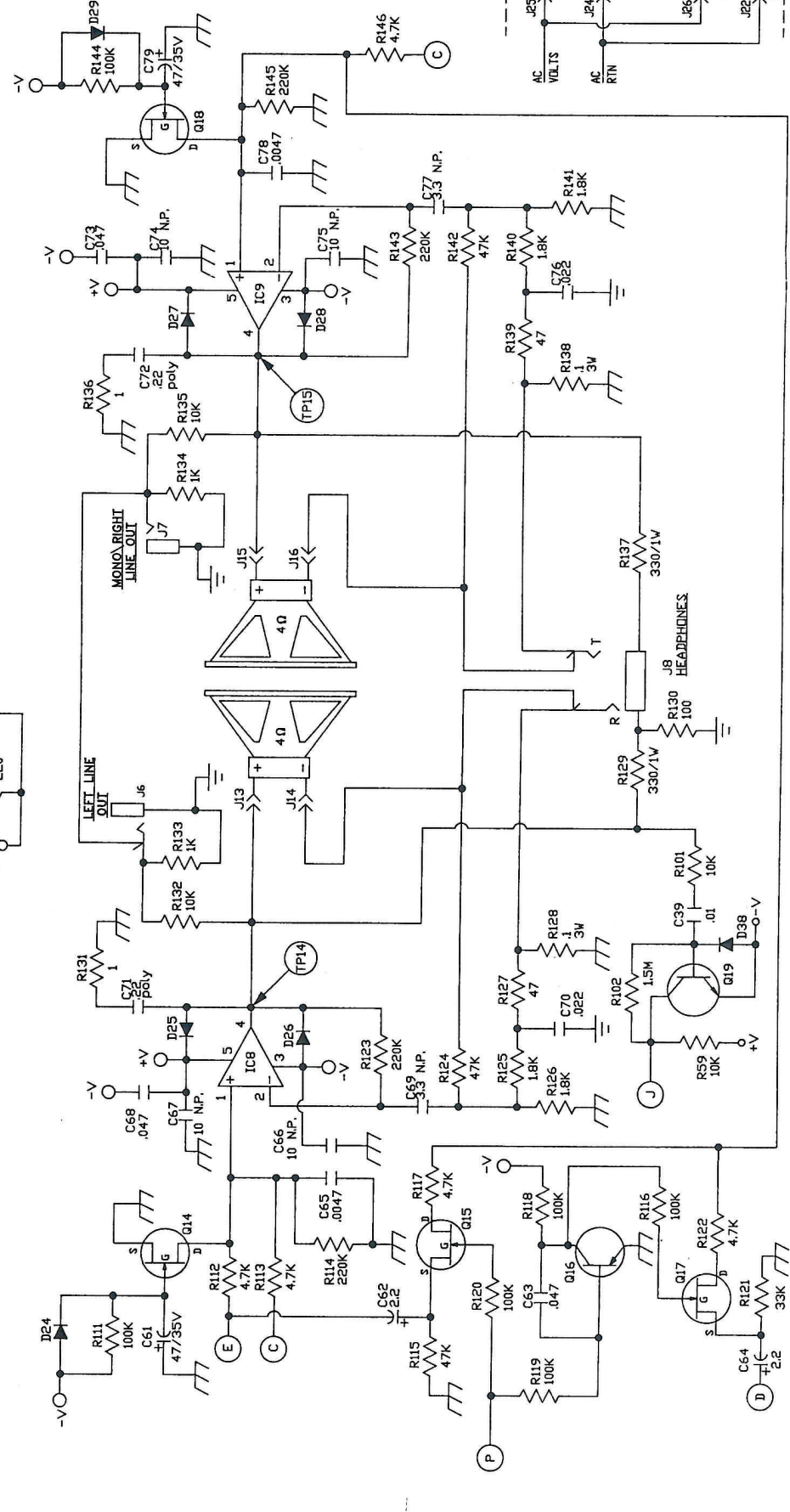
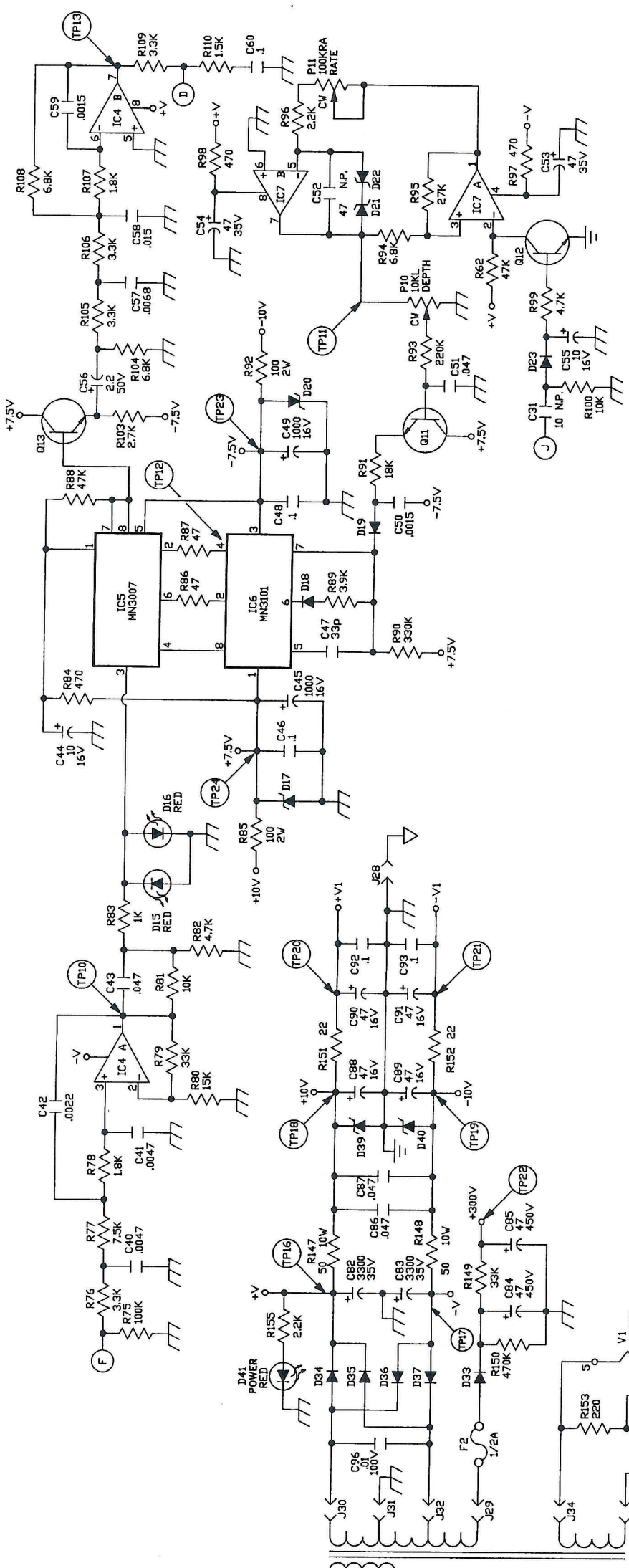
- NOTES**
- 1) CAUTION: SHOCK HAZARD!! THIS UNIT CONTAINS HAZARDOUS VOLTAGE. DISCONNECT POWER AND BE SURE POWER SUPPLY IS DISCHARGED BEFORE TOUCHING INTERNAL PARTS.
 - 2) UNLESS NOTED, RESISTOR VALUES IN OHMS, 1/4W-5% TOL. CAPACITOR VALUES IN MICROFARADS, 50V-10% TOL.
 - 3) VOLTAGES ARE MEASURED WITH 1 MEGOHM OSCILLOSCOPE AND 10 MEGOHM DIGITAL VOLTMETER.
 - 4) CIRCUIT GROUND ⏏ CHASSIS GROUND ⏏ DIRTY GROUND ⏏

| | | | |
|--|-------------|------------|---------------|
| A | MGA 6-18-90 | 26 6-18-90 | TECH. 6-18-90 |
| ORIG. | MGA 2-2-90 | | |
| VERS. | DRAWN BY | CHECKED BY | APPROVED BY |
| PAGE # | 1 OF 2 | DRAWING # | 16-054-01 |
| DESCRIPTION: AX-44C SCHEMATIC | | | |
|  SLM ELECTRONICS. 11880 BORMAN DR. ST. LOUIS, MO 63146 | | | |

- NOTES**
- 1) CAUTION, SHOCK HAZARD!! THIS UNIT CONTAINS HAZARDOUS VOLTAGE. DISCONNECT POWER AND BE SURE POWER SUPPLY IS DISCHARGED BEFORE TOUCHING INTERNAL PARTS.
 - 2) UNLESS NOTED, RESISTOR VALUES IN OHMS, 1/4W-5% TOL. CAPACITOR VALUES IN MICROFARADS, 50V-10% TOL.
 - 3) VOLTAGES ARE MEASURED WITH 1 MEGOHM OSCILLOSCOPE AND 10 MEGOHM DIGITAL VOLTMETER.
 - 4) CIRCUIT GROUND --- CHASSIS GROUND --- DIRTY GROUND ---

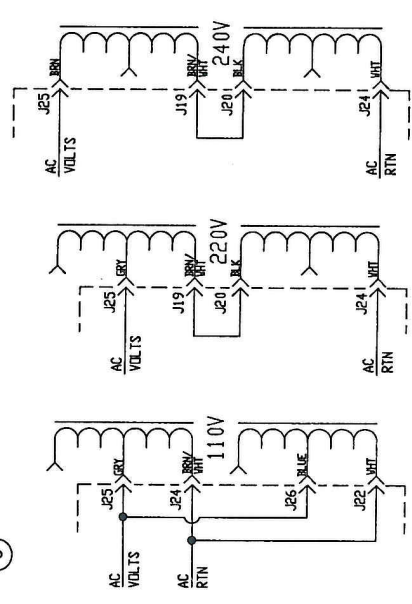


CAUTION:
THIS SCHEMATIC IS PROVIDED FOR USE BY QUALIFIED PERSONNEL. TO AVOID RISK OF ELECTRIC SHOCK, REFER SERVICING TO QUALIFIED SERVICE PERSONNEL. DO NOT PERFORM ANY SERVICING BEYOND THAT EXPLAINED IN THE OPERATING INSTRUCTIONS.



| CONDITION 1, CHANNEL B | | CONDITION 2, CHANNEL A | | | |
|------------------------|------------------|------------------------|------|----------|----------|
| T.P. | WAVE | VOLTAGES | T.P. | WAVE | VOLTAGES |
| 1 | 700mVp-p | 25mVp-p | 16 | 14.5VDC | +14.5VDC |
| 2 | 500mVp-p 100mVDC | 1Vp-p 100mVDC | 17 | -14.5VDC | -14.5VDC |
| 3 | 1.5Vp-p | 38Vp-p 1VDC | 18 | +10.5VDC | +10.5VDC |
| 4 | 2.7Vp-p | 20Vp-p | 19 | -10.5VDC | -10.5VDC |
| 5 | 1.2Vp-p | 6Vp-p | 20 | +10.5VDC | +10.5VDC |
| 6 | 2Vp-p 1.5VDC | 1.5VDC | 21 | -10.5VDC | -10.5VDC |
| 7 | | 3.2Vp-p | 22 | +240VDC | +240VDC |
| 8 | 12Vp-p | 35Vp-p W/REY @ 10 | 23 | -7.5VDC | -7.5VDC |
| 9 | 400mVp-p | 500mVp-p | 24 | +7.5VDC | +7.5VDC |
| 10 | 2.2Vp-p | 850mVp-p | | | |
| 11 | 6Vp-p | 9.6 Hz W/RATE @ 10" | | | |
| 12 | 15Vp-p | 240 KHz W/DEPTH @ 10" | | | |
| 13 | 1.8Vp-p | 3.7Vp-p | | | |
| 14 | 23Vp-p | 27Vp-p 80mVDC | | | |
| 15 | 23Vp-p | 27Vp-p 40mVDC | | | |

*VARIES WITH FREQUENCY



EXPORT WIRING

| | | | | |
|--------|-------------|------------|-----------|-------------|
| A | MGA 6-18-90 | EC | 6-18-90 | 16-6-18-90 |
| ORIG. | MGA 2-2-90 | CHECKED BY | | APPROVED BY |
| VERS. | | DRAWN BY | | |
| PAGE # | 2 OF 2 | DRAWING # | 16-054-01 | |

DESCRIPTION: AX-44C SCHEMATIC

SLM ELECTRONICS.
11880 BORMAN DR.
ST. LOUIS, MO 63146