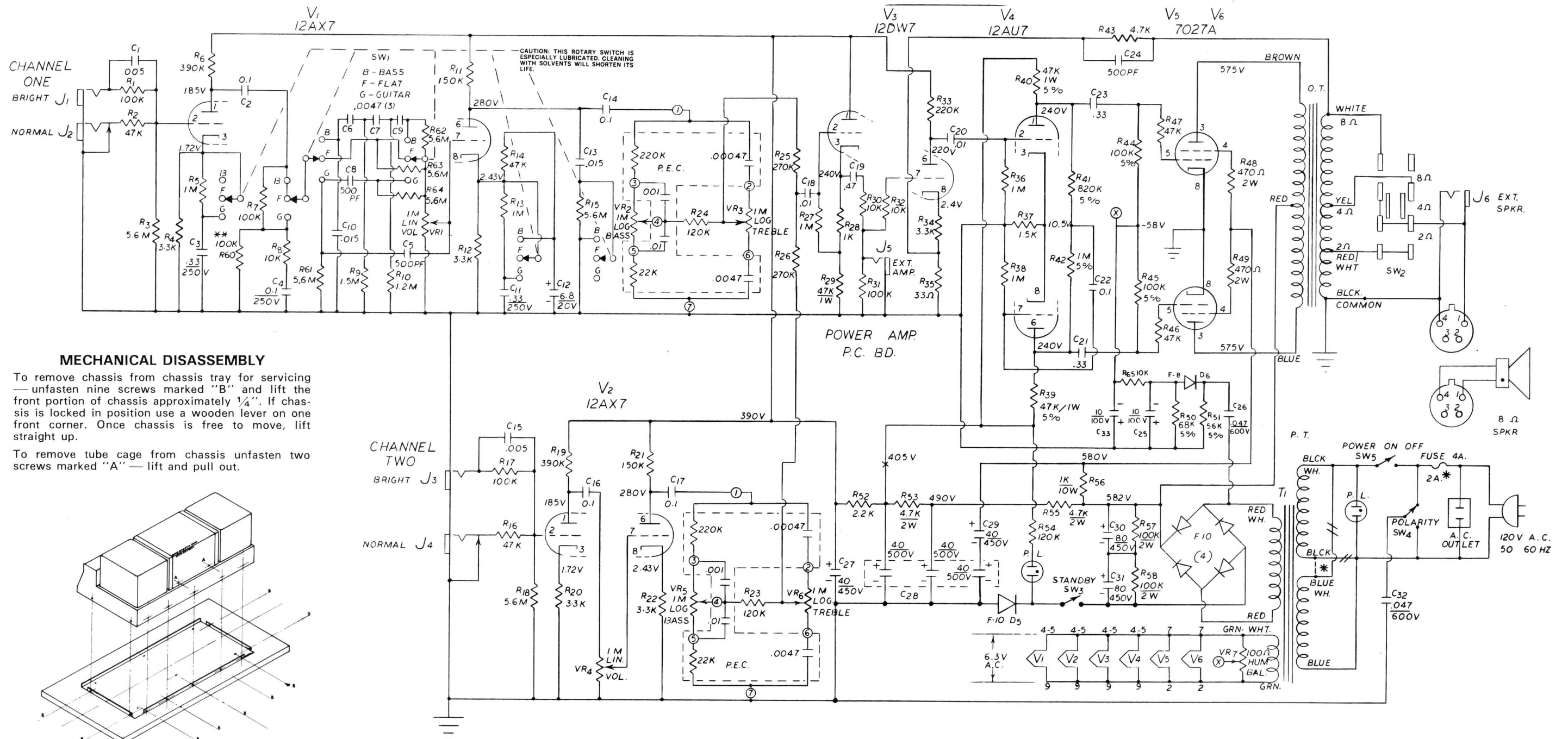


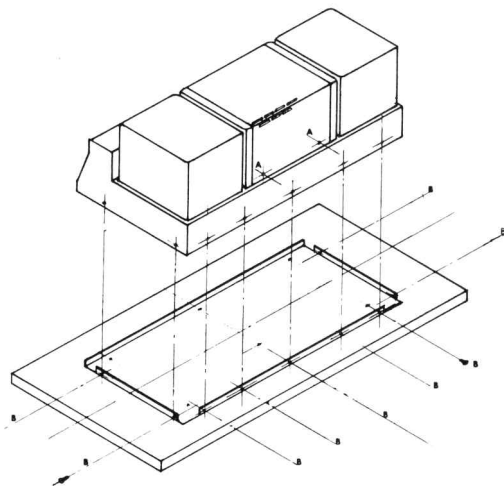
MODEL B15S SCHEMATIC DIAGRAM (REV. C)



MECHANICAL DISASSEMBLY

To remove chassis from chassis tray for servicing — unfasten nine screws marked "B" and lift the front portion of chassis approximately 1/4". If chassis is locked in position use a wooden lever on one front corner. Once chassis is free to move, lift straight up.

To remove tube cage from chassis unfasten two screws marked "A" — lift and pull out.



A.C. VOLTAGE READINGS

Note: Readings taken using 10 Meg. input impedance VTVM with Treble and Bass controls set at mid-position.

INPUT: 0.3V A.C. at 400 Hz

OUTPUT: 6.325V at 2 Ohms 3/4 Output Power
8.95 V at 4 Ohms 3/4 Output Power
12.65 V at 8 Ohms 3/4 Output Power

REF.	TUBE	PIN NO.								
		1	2	3	4	5	6	7	8	9
V1	12AX7	10V	.3		Fil	Fil	5.8	.5		Fil
V2	12AX7	10V	.3		Fil	Fil	5.8	.5		Fil
V3	12DW7		.32	.3	Fil	Fil	3.5	.28		Fil
V4	12AU7	3.8V	3.4		Fil	Fil	38	3.4		Fil
V5	7027A		Fil	250		38				Fil
V6	7027A		Fil	250		38				Fil

NOTES: UNLESS OTHERWISE SPECIFIED

1. Capacitance values are in microfarads, 10%, 400V.
2. Resistors are 1/2W, 10%, composition.
3. D.C. voltages with no signal applied using a 20,000 ohm/volt voltmeter.
4. D.C. voltages are positive with respect to chassis ground.
5. Resistors R60, 61, 62, 63, & 64 are on SW1.
6. * Indicates export version only.
7. Actual circuit may vary due to normal production changes.

WARNING

For maximum safety, reliability and performance, all parts must be replaced by those having identical specifications. Under no circumstances may the original design be modified or altered without permission from the Ampeg Company.