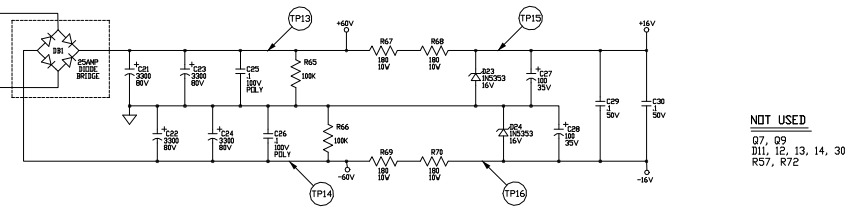
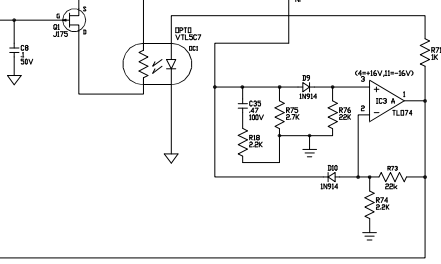
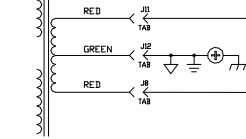


NOTES

- 1) CAUTION: SHOCK HAZARD!
THIS UNIT CONTAINS HAZARDOUS VOLTAGE. DISCONNECT POWER AND BE SURE POWER SUPPLY IS DISCHARGED BEFORE TOUCHING INTERNAL PARTS.
- 2) UNLESS NOTED, RESISTOR VALUES IN OHMS, 1/4W-5% TOL. CAPACITOR VALUES IN MICROFARADS, 50V-10% TOL.
- 3) VOLTAGES ARE MEASURED WITH 1 MEGOHM OSCILLOSCOPE AND 10 MEGOHM DIGITAL VOLTMETER.
- 4) SIGNAL GROUND \oplus DIRTY GROUND \ominus CHASSIS GROUND ---

POWER TRANSFORMER
P/N 94-158-30
OR 94-158-40



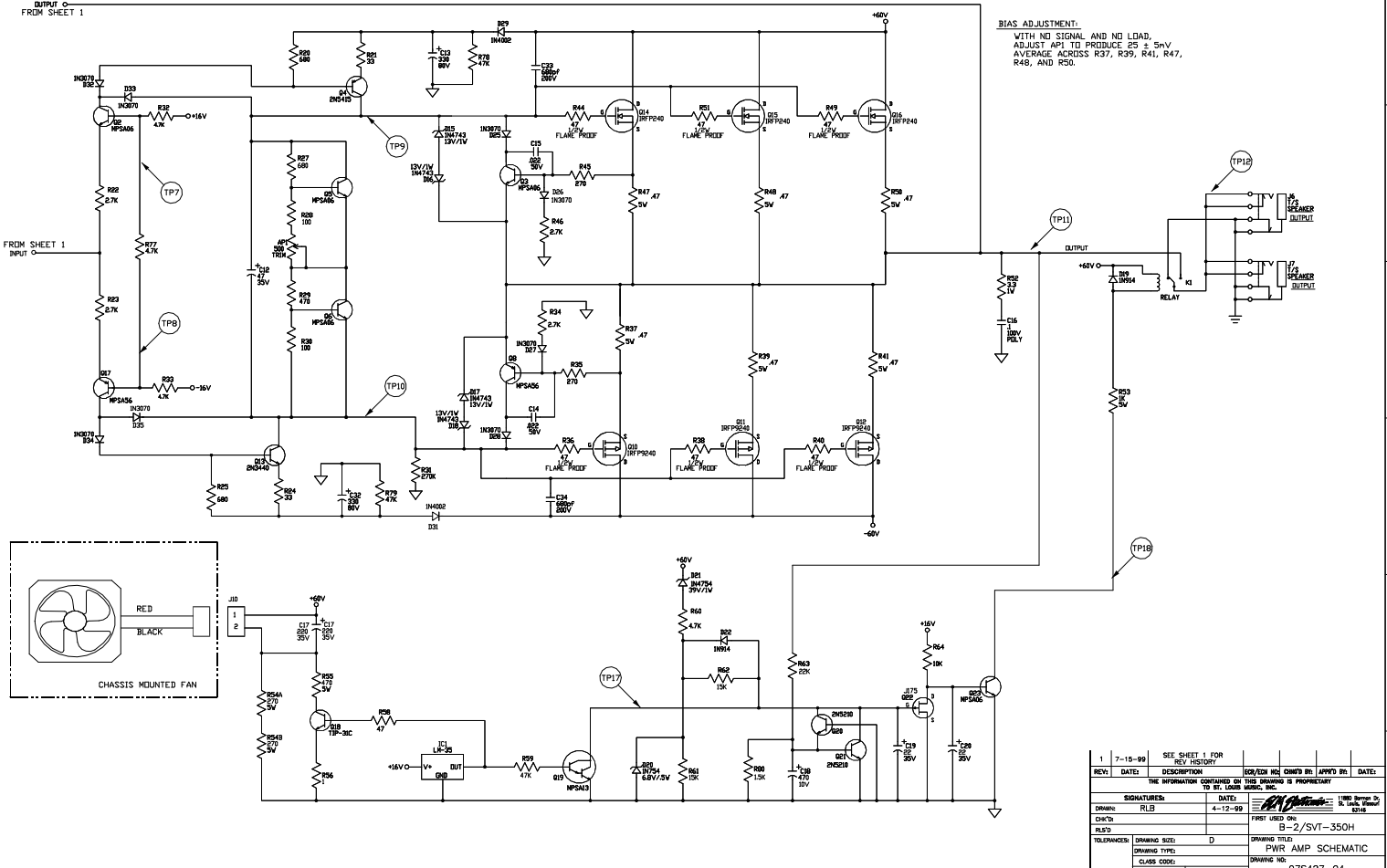
NOT USED
07, 09
D11, 12, 13, 14, 30
R57, R72

1	6-21-90	CHANGED 01 & 022 FROM 4176 TO 4175 CONTROL ISSUE	NO0362	RLB		
0	7-15-99					
REV.	DATE	DESCRIPTION	ECN/EN NO.	OWN'S IN.	APP'D. IN.	DATE
THE INFORMATION CONTAINED ON THIS DRAWING IS PROPRIETARY TO ST. LOUIS MORGAN, INC.						
SIGNATURES:		DATE:	1980 Morgan D. & Dale Morgan 8216			
DRAWN:	RLB	4-12-99	FIRST USED ON: B-2/SVT-350H			
RLSD:			DRAWING TITLE: PWR AMP SCHEMATIC			
TOLERANCES:	DRAWING SIZE: D	DRAWING NO. 075427-04				
DRAWING TYPE:		DRAWING NO.				
CLASS CODE:		SCALE: 1:1 SHEET: 1 OF 2				

OUTPUT C FROM SHEET 1

FROM SHEET 1 INPUT

BIAS ADJUSTMENT:
WITH NO SIGNAL AND NO LOAD,
ADJUST APT TO PRODUCE 25 ± 5mV
AVERAGE ACROSS R37, R39, R41, R47,
R48, AND R50.



1	7-15-99	SEE SHEET 1 FOR REV HISTORY				
REV.	DATE	DESCRIPTION	ECN/EN NO.	OWN'S IN.	APP'D. IN.	DATE
THE INFORMATION CONTAINED ON THIS DRAWING IS PROPRIETARY TO ST. LOUIS MORGAN, INC.						
SIGNATURES:		DATE:	1980 Morgan D. & Dale Morgan 8216			
DRAWN:	RLB	4-12-99	FIRST USED ON: B-2/SVT-350H			
RLSD:			DRAWING TITLE: PWR AMP SCHEMATIC			
TOLERANCES:	DRAWING SIZE: D	DRAWING NO. 075427-04				
DRAWING TYPE:		DRAWING NO.				
CLASS CODE:		SCALE: 1:1 SHEET: 2 OF 2				