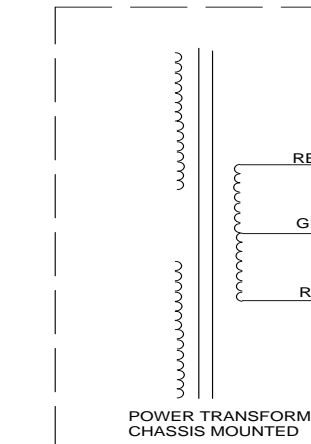


TEST POINT CONDITIONS:
 INPUT SIGNAL AT J9 PIN 2.
 1V P-P @ 1KHz SINE WAVE
 J9 PIN 3 CONNECTED TO J9 PIN 4,
 120VAC LINE VOLTAGE, NO LOAD.

TUNER/PRE LINE OUT
 EFFECTS SEND
 EFFECTS RETURN
 PREAMP OUT
 LIMITER
 PREAMP GROUND
 +16V
 -16V
 DIRTY GROUND
 LIMIT LED



ASSY PART # 07-388-01
 ASSY PART # 07-388-02

| Power Table | | |
|-------------|------|------|
| RefDes | +16V | -16V |
| IC2 | 8 | 4 |
| IC3 | 4 | 11 |
| IC4 | 8 | 4 |

4) NOTE: GROUND SYMBOLS REPRESENT GROUNDS AS SHOWN:

 DIRTY GND SIGNAL GND CHASSIS GND

5) NOTE: TEST POINT S ARE ROR -01 ASSY. OTHER ASSYS ARE SIMILAR.

CAUTION:
 THIS SCHEMATIC IS PROVIDED FOR USE BY QUALIFIED PERSONNEL.
 TO AVOID RISK OF ELECTRIC SHOCK, REFER SERVICING TO QUALIFIED
 SERVICE PERSONNEL. DO NOT PERFORM ANY SERVICING BEYOND
 THAT EXPLAINED IN THE OPERATING INSTRUCTIONS.

NOTES:
 1) CAUTION: SHOCK HAZARD!!
 THIS UNIT CONTAINS HAZARDOUS VOLTAGE. DISCONNECT POWER
 AND BE SURE POWER SUPPLY IS DISCHARGED BEFORE
 TOUCHING INTERNAL PARTS.
 2) UNLESS NOTED, RESISTOR VALUES IN OHMS, 1/8W-5% TOL.
 CAPACITOR VALUES IN MICROFARADS, 50V-10% TOL.
 3) VOLTAGES ARE MEASURED WITH 1 MEGOHM OSCILLOSCOPE
 AND 10 MEGOHM DIGITAL VOLTMETER.

| REV | Date | DESCRIPTION | Ecr(s)/Ecn(s) | Chgd By | Appvd by | Date |
|-----|----------|---------------|---------------|---------|----------|------|
| 0 | 2/13/04 | CONTROL ISSUE | | | | |
| A | 12/18/03 | INITIAL ISSUE | | | | |

THE INFORMATION CONTAINED ON THIS DRAWING IS PROPRIETARY TO
 ST. LOUIS MUSIC, INC.

Signatures: _____ Date: _____
 Drawn: REM 08/08/03
 Checked: _____
 Released: _____
 Plot Date: Fri Feb 13, 2004 Drawing Size: C
 Plot Time: 13:15:29 Drawing Type: Schematic
 Tolerance: _____ Class Code: NONE
 Sheet 1 of 2

11880 Borman Drive, St. Louis, MO 63146
 First Used On: _____
 Drawing Title: **SCHEMATIC - POWER AMP**
 Drawing Number: **07S388**

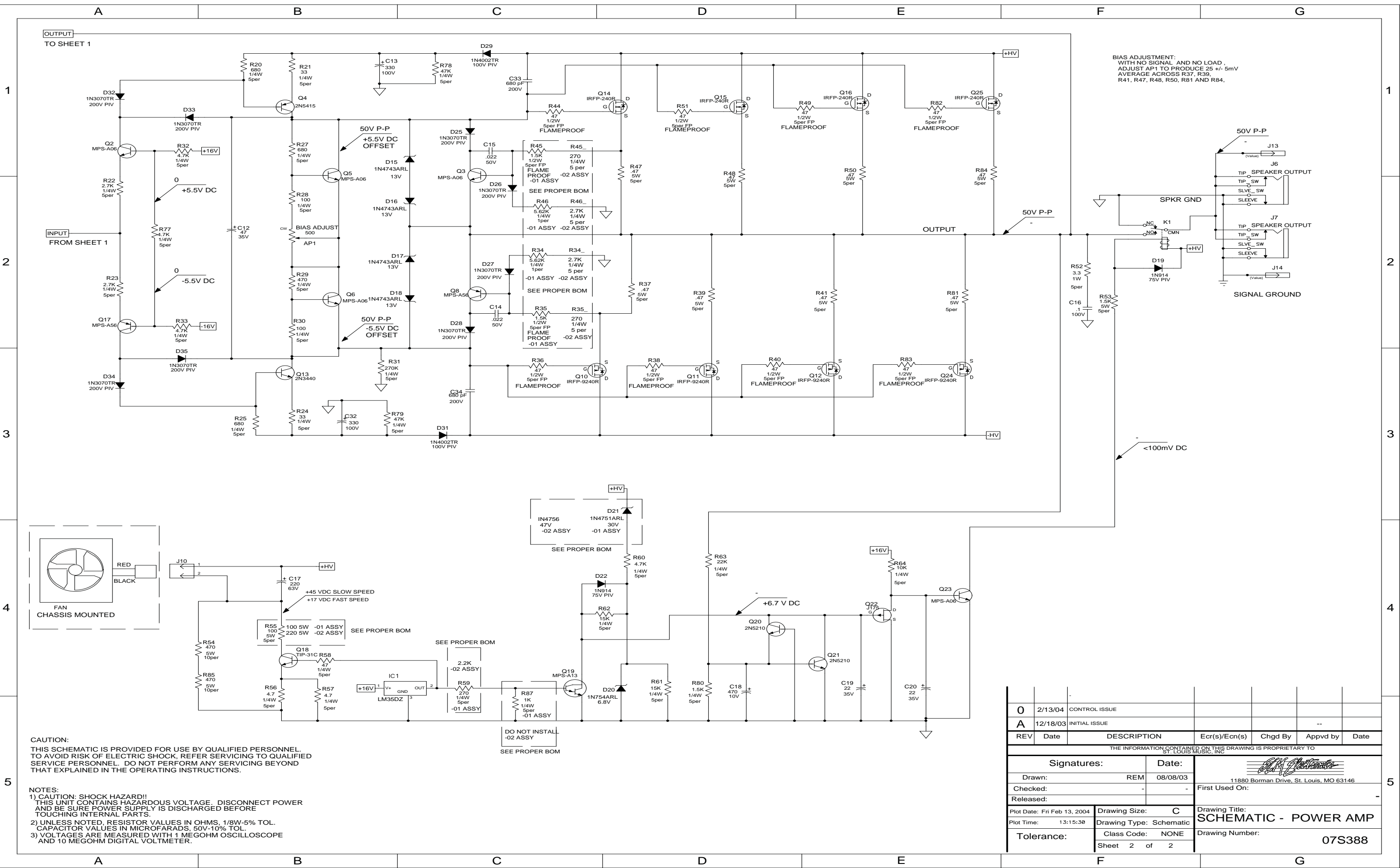


BA500

©2007 LOUD Technologies Inc. All rights reserved

Power Amplifier PCB Schematics

PAGE 1



| 0 | 2/13/04 | CONTROL ISSUE | | | |
|--|----------|-------------------------|---------------|---|----------|
| A | 12/18/03 | INITIAL ISSUE | | | |
| REV | Date | DESCRIPTION | Ecr(s)/Ecn(s) | Chgd By | Appvd by |
| THE INFORMATION CONTAINED ON THIS DRAWING IS PROPRIETARY TO ST. LOUIS MUSIC, INC. | | | | | |
| Signatures: | | Date: | | | |
| Drawn: REM | | 08/08/03 | | 11880 Borman Drive, St. Louis, MO 63146 | |
| Checked: - | | - | | First Used On: - | |
| Released: - | | - | | - | |
| Plot Date: Fri Feb 13, 2004 | | Drawing Size: C | | Drawing Title: SCHEMATIC - POWER AMP | |
| Plot Time: 13:15:38 | | Drawing Type: Schematic | | Drawing Number: 07S388 | |
| Tolerance: | | Class Code: NONE | | Sheet 2 of 2 | |