

**TEST SPECIFICATIONS**

- DC VOLTAGES AND RIPPLE MEASURED WITH NO SIGNAL APPLIED
- TP CONDITIONS:  
GAIN @ 9 O'CLOCK, VOL AND MASTER @ 10, TONES @ 5, SPEED, INT, REV @ 0
- RELAYS SHOWN IN NON-ENERGIZED MODE ('NC') = DIRTY CHANNEL

6.5mV RMS @ 1kHz

CLEAN 325mV RMS  
DIRTY 375mV RMS  
126V DC

CLEAN .600V RMS  
DIRTY 7.82V RMS  
135V DC

CLEAN 1.46V RMS  
DIRTY 53V RMS  
DC 136VDC

TREM ON 3.3VDC  
TREM OFF 0V

TREMOLO FS

3.3V

1N914

2N5087

1N746ARL

REV ON 3.3VDC  
REV OFF ---

TO CHANNEL SWITCH

1N914

1N746ARL

3.3V

1N914

1N754ARL

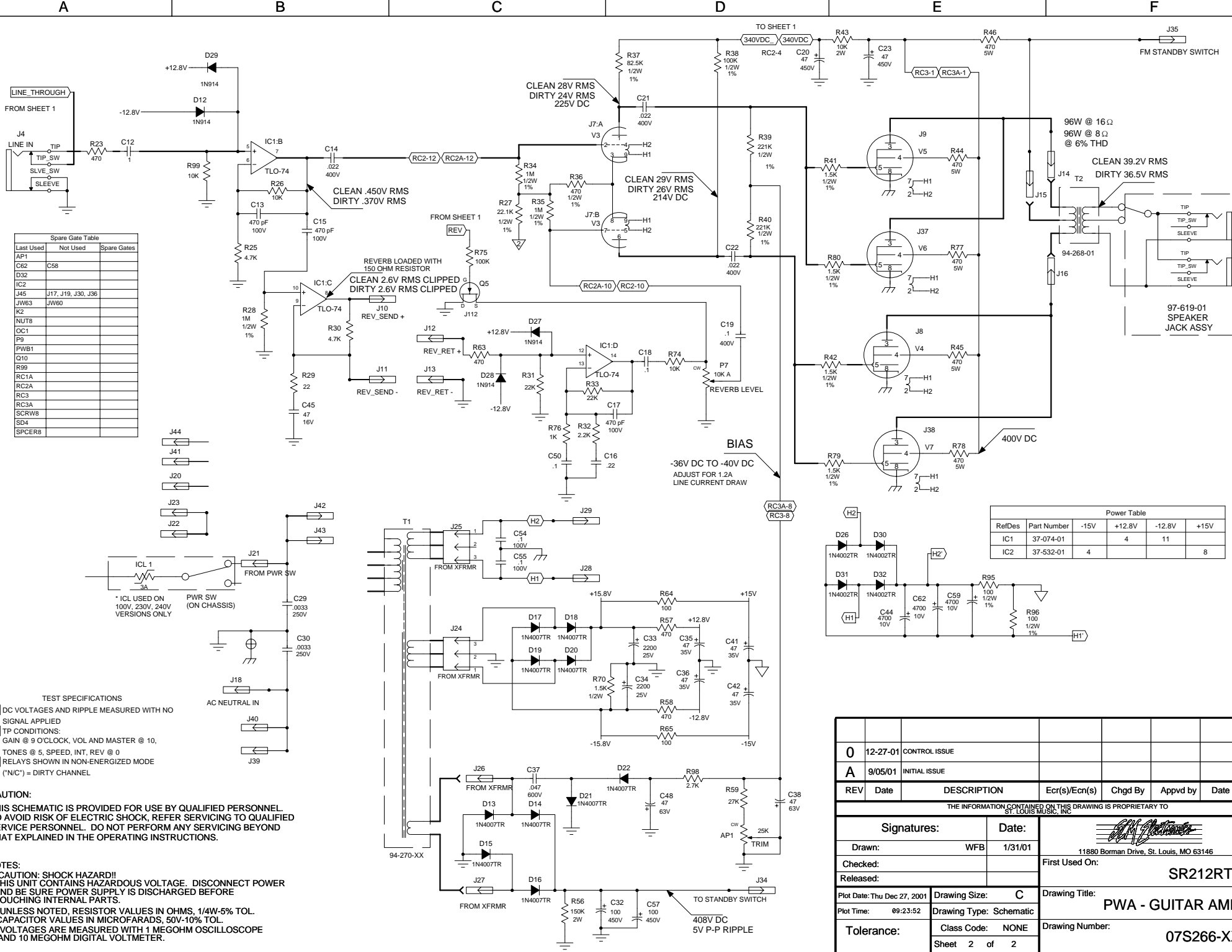
6.8V

**CAUTION:**  
THIS SCHEMATIC IS PROVIDED FOR USE BY QUALIFIED PERSONNEL TO AVOID RISK OF ELECTRIC SHOCK. REFER SERVICING TO QUALIFIED SERVICE PERSONNEL. DO NOT PERFORM ANY SERVICING BEYOND THAT EXPLAINED IN THE OPERATING INSTRUCTIONS.

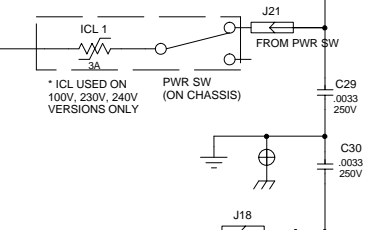
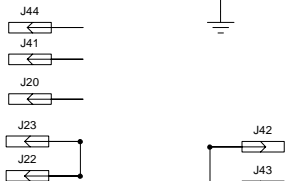
**NOTES:**

- CAUTION: SHOCK HAZARD!! THIS UNIT CONTAINS HAZARDOUS VOLTAGE. DISCONNECT POWER AND BE SURE POWER SUPPLY IS DISCHARGED BEFORE TOUCHING INTERNAL PARTS.
- UNLESS NOTED, RESISTOR VALUES IN OHMS, 1/4W-5% TOL. CAPACITOR VALUES IN MICROFARADS, 50V-10% TOL.
- VOLTAGES ARE MEASURED WITH 1 MEGOHM OSCILLOSCOPE AND 10 MEGOHM DIGITAL VOLTMETER.

0	12-27-01	CONTROL ISSUE			
A	9/05/01	INITIAL ISSUE			
REV	Date	DESCRIPTION	Ecr(s)/Ecn(s)	Chgd By	Appvd by Date
THE INFORMATION CONTAINED ON THIS DRAWING IS PROPRIETARY TO ST. LOUIS MUSIC, INC					
Signatures:		Date:		 11880 Borman Drive, St. Louis, MO 63146	
Drawn:		WFB 1/31/01			
Checked:				First Used On:	
Released:				SR212RTa	
Plot Date: Thu Dec 27, 2001		Drawing Size: C		Drawing Title:	
Plot Time: 09:23:52		Drawing Type: Schematic		PWA - GUITAR AMP	
Tolerance:		Class Code: NONE		Drawing Number:	
Sheet 1 of 2				07S266-XX	



Spare Gate Table		
Last Used	Not Used	Spare Gates
AP1		
C62	C58	
D32		
IC2		
J45	J17, J19, J30, J36	
JW63	JW60	
K2		
NU78		
OC1		
P9		
PWB1		
Q10		
R99		
RC1A		
RC2A		
RC3		
RC3A		
SCRW8		
SD4		
SPCER8		

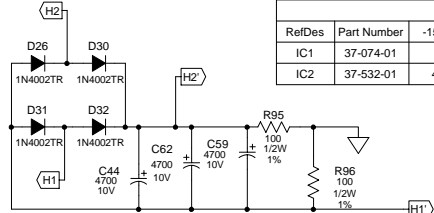


- TEST SPECIFICATIONS**
- DC VOLTAGES AND RIPPLE MEASURED WITH NO SIGNAL APPLIED
  - TP CONDITIONS: GAIN @ 9 O'CLOCK, VOL AND MASTER @ 10, TONES @ 5, SPEED, INT, REV @ 0
  - RELAYS SHOWN IN NON-ENERGIZED MODE ("N/C") = DIRTY CHANNEL

**CAUTION:**  
THIS SCHEMATIC IS PROVIDED FOR USE BY QUALIFIED PERSONNEL TO AVOID RISK OF ELECTRIC SHOCK. REFER SERVICING TO QUALIFIED SERVICE PERSONNEL. DO NOT PERFORM ANY SERVICING BEYOND THAT EXPLAINED IN THE OPERATING INSTRUCTIONS.

- NOTES:**
- CAUTION: SHOCK HAZARD!! THIS UNIT CONTAINS HAZARDOUS VOLTAGE. DISCONNECT POWER AND BE SURE POWER SUPPLY IS DISCHARGED BEFORE TOUCHING INTERNAL PARTS.
  - UNLESS NOTED, RESISTOR VALUES IN OHMS, 1/4W-5% TOL. CAPACITOR VALUES IN MICROFARADS, 50V-10% TOL.
  - VOLTAGES ARE MEASURED WITH 1 MEGOHM OSCILLOSCOPE AND 10 MEGOHM DIGITAL VOLTMETER.

Power Table					
RefDes	Part Number	-15V	+12.8V	-12.8V	+15V
IC1	37-074-01		4	11	
IC2	37-532-01	4			8



0	12-27-01	CONTROL ISSUE				
A	9/05/01	INITIAL ISSUE				
REV	Date	DESCRIPTION	Ecr(s)/Ecn(s)	Chgd By	Appvd by	Date
THE INFORMATION CONTAINED ON THIS DRAWING IS PROPRIETARY TO ST. LOUIS MUSIC, INC						
Signatures:			Date:		 11880 Borman Drive, St. Louis, MO 63146	
Drawn: WFB			1/31/01			
Checked:					First Used On: SR212RTa	
Released:					Drawing Title: PWA - GUITAR AMP	
Plot Date: Thu Dec 27, 2001		Drawing Size: C		Drawing Number: 07S266-XX		
Plot Time: 09:23:52		Drawing Type: Schematic		Drawing Number: 07S266-XX		
Tolerance:		Class Code: NONE		Sheet 2 of 2		