

- TEST POINT CONDITIONS
- 1) 100 OHM INPUT SIGNAL
 - 2) 0.01 OHM RESISTOR @ 10"
 - 3) 0.01 OHM TONES @ 5"
 - 4) BASS "OUT" - FULL SWITCHES "IN"

T.P.	AC VOLTAGE	DC VOLTAGE	WAVEFORM	CONDITIONS
TP8	...	-14V		
TP6	...	+14V		CH SELECT BUITON "IN"
TP7	0V	0V		
TP7	2.6V P-P	0V		CH BUITON "IN"
TP8	0V	0V		
TP8	4V P-P	0V		CH BUITON "IN"

T.P.	AC VOLTAGE	DC VOLTAGE	WAVEFORM	CONDITIONS
TP4	0V	0V		CH BUITON "IN"
TP4	3V P-P	0V		CH BUITON "IN" AND BASS SWITCH FULLY "OUT"
TP5	...	14V		
TP5	...	0V		GATE SWITCH FULLY "OUT" AND SIGNAL

CAUTION:
THIS SCHEMATIC IS PROVIDED FOR USE BY QUALIFIED PERSONNEL TO AVOID RISK OF ELECTRIC SHOCK. REFER TO QUALIFIED SERVICE PERSONNEL FOR INFORMATION ON SAFETY PROCEDURES THAT EXPLAINED IN THE OPERATING INSTRUCTIONS.

NOTES:
1) THIS UNIT CONTAINS HAZARDOUS VOLTAGE. DISCONNECT POWER AND BE SURE POWER SUPPLY IS DISCHARGED BEFORE WORKING ON THIS UNIT.
2) UNDESIRABLE TONE QUALITY MAY BE CAUSED BY WEAR OR DEFECTIVE CAPACITOR VALUES IN OHMS, 1/4W, 5%, 10%, 50V, 10% TOL. CAPACITOR VALUES IN MICROFARADS, 50V, 10% TOL.
3) VOLTAGES ARE MEASURED WITH 1 MEGOHM OSCILLOSCOPE AND 10 MEGOHM DIGITAL VOLTMETER.

ASSEMBLY PART NUMBER 07-542-02
ASSEMBLY DWG NUMBER 07-542-XX

REV	DATE	DESCRIPTION	ENGINTEER	CHKD BY	DATE
4	8/20/01	CONVERTED FROM PLOKS			

THE INFORMATION CONTAINED ON THIS SHEET IS THE PROPERTY OF TASCAM, INC. NO PART OF THIS INFORMATION IS TO BE REPRODUCED OR TRANSMITTED IN ANY FORM OR BY ANY MEANS, ELECTRONIC OR MECHANICAL, INCLUDING PHOTOCOPYING, RECORDING, OR BY ANY INFORMATION STORAGE AND RETRIEVAL SYSTEM.

Signature: _____ Date: _____

Checked: _____ Date: _____

Part Name: VAW423-202 2-WAY BASS PREAMP
Part Number: 075542-XX
Drawing Title: BASS PREAMP
Drawing Number: 075542-XX

CAUTION:
THIS SCHEMATIC IS PROVIDED FOR USE BY QUALIFIED PERSONNEL.
TO AVOID RISK OF ELECTRIC SHOCK, REFER SERVICING TO QUALIFIED
SERVICE PERSONNEL. DO NOT PERFORM ANY SERVICING BEYOND
THAT EXPLAINED IN THE OPERATING INSTRUCTIONS.

NOTES:
1) CAUTION: SHOCK HAZARD!
DISCONNECT POWER SUPPLY AND DISCHARGE CAPACITORS
BEFORE SERVICING.
2) UNLESS NOTED, RESISTOR VALUES IN OHMS, 1.4W, 5% TOL.
3) CAPACITOR VALUES IN MICROFARADS, 50V, 10% TOL.
4) VOLTAGES ARE MEASURED WITH 1 MEGOHM OSCILLOSCOPE
AND 10 MEGOHM DIGITAL VOLTMETER.

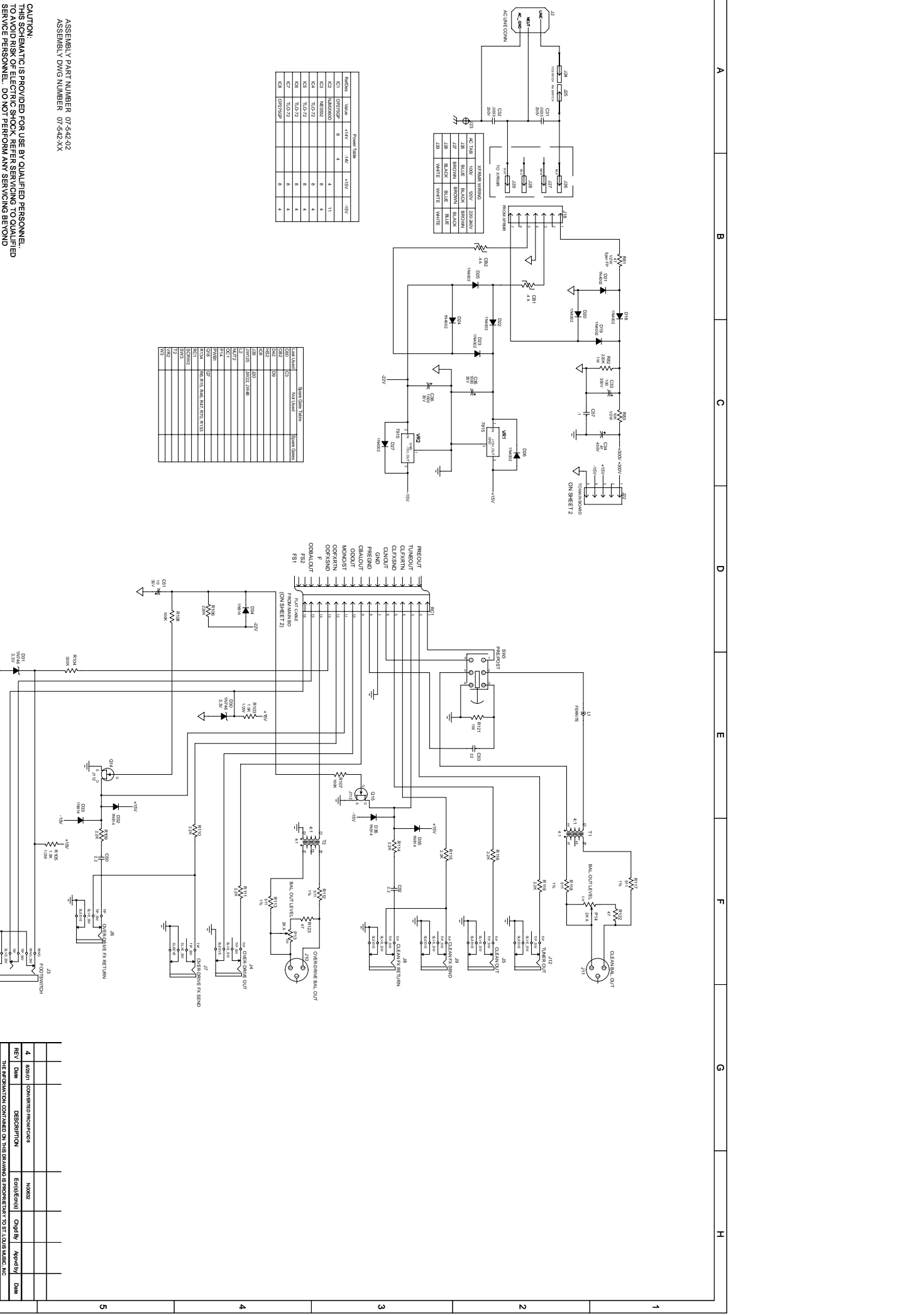
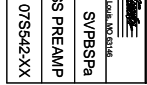
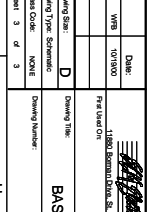
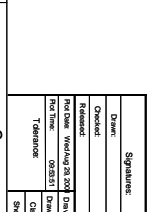
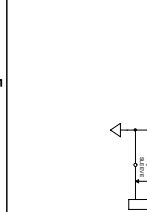
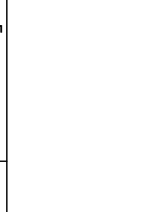
ASSEMBLY PART NUMBER 07542-02
ASSEMBLY DIAG NUMBER 07542-XX

Power Table

WINDING	Value	+15V	-15V	-10V
W1	0.75/0.75	0	4	11
W2	0.75/0.75	0	4	11
W3	0.75/0.75	0	4	11
W4	0.75/0.75	0	4	11
W5	0.75/0.75	0	4	11
W6	0.75/0.75	0	4	11
W7	0.75/0.75	0	4	11
W8	0.75/0.75	0	4	11

Serial Output Table

Part Number	Value	Serial Output
W1	0.75/0.75	0
W2	0.75/0.75	0
W3	0.75/0.75	0
W4	0.75/0.75	0
W5	0.75/0.75	0
W6	0.75/0.75	0
W7	0.75/0.75	0
W8	0.75/0.75	0



REVISIONS

REV	DATE	DESCRIPTION
4	06/01/01	CONVERTED PROLOGUES

DESIGN INFORMATION

Part Name	Quantity	Part Number	Rev
Resistor	100	100	1
Capacitor	100	100	1
Diode	100	100	1
Transformer	100	100	1

APPROVALS

Signature	Date	Position
[Signature]	06/01/01	Design Engineer
[Signature]	06/01/01	Quality Control

PROPERTY INFORMATION

Part Name	Quantity	Part Number	Rev
Resistor	100	100	1
Capacitor	100	100	1
Diode	100	100	1
Transformer	100	100	1

REVISIONS

REV	DATE	DESCRIPTION
4	06/01/01	CONVERTED PROLOGUES

DESIGN INFORMATION

Part Name	Quantity	Part Number	Rev
Resistor	100	100	1
Capacitor	100	100	1
Diode	100	100	1
Transformer	100	100	1

APPROVALS

Signature	Date	Position
[Signature]	06/01/01	Design Engineer
[Signature]	06/01/01	Quality Control

PROPERTY INFORMATION

Part Name	Quantity	Part Number	Rev
Resistor	100	100	1
Capacitor	100	100	1
Diode	100	100	1
Transformer	100	100	1

REVISIONS

REV	DATE	DESCRIPTION
4	06/01/01	CONVERTED PROLOGUES

DESIGN INFORMATION

Part Name	Quantity	Part Number	Rev
Resistor	100	100	1
Capacitor	100	100	1
Diode	100	100	1
Transformer	100	100	1

APPROVALS

Signature	Date	Position
[Signature]	06/01/01	Design Engineer
[Signature]	06/01/01	Quality Control

PROPERTY INFORMATION

Part Name	Quantity	Part Number	Rev
Resistor	100	100	1
Capacitor	100	100	1
Diode	100	100	1
Transformer	100	100	1

REVISIONS

REV	DATE	DESCRIPTION
4	06/01/01	CONVERTED PROLOGUES

DESIGN INFORMATION

Part Name	Quantity	Part Number	Rev
Resistor	100	100	1
Capacitor	100	100	1
Diode	100	100	1
Transformer	100	100	1

APPROVALS

Signature	Date	Position
[Signature]	06/01/01	Design Engineer
[Signature]	06/01/01	Quality Control

PROPERTY INFORMATION

Part Name	Quantity	Part Number	Rev
Resistor	100	100	1
Capacitor	100	100	1
Diode	100	100	1
Transformer	100	100	1

REVISIONS

REV	DATE	DESCRIPTION
4	06/01/01	CONVERTED PROLOGUES

DESIGN INFORMATION

Part Name	Quantity	Part Number	Rev
Resistor	100	100	1
Capacitor	100	100	1
Diode	100	100	1
Transformer	100	100	1

APPROVALS

Signature	Date	Position
[Signature]	06/01/01	Design Engineer
[Signature]	06/01/01	Quality Control