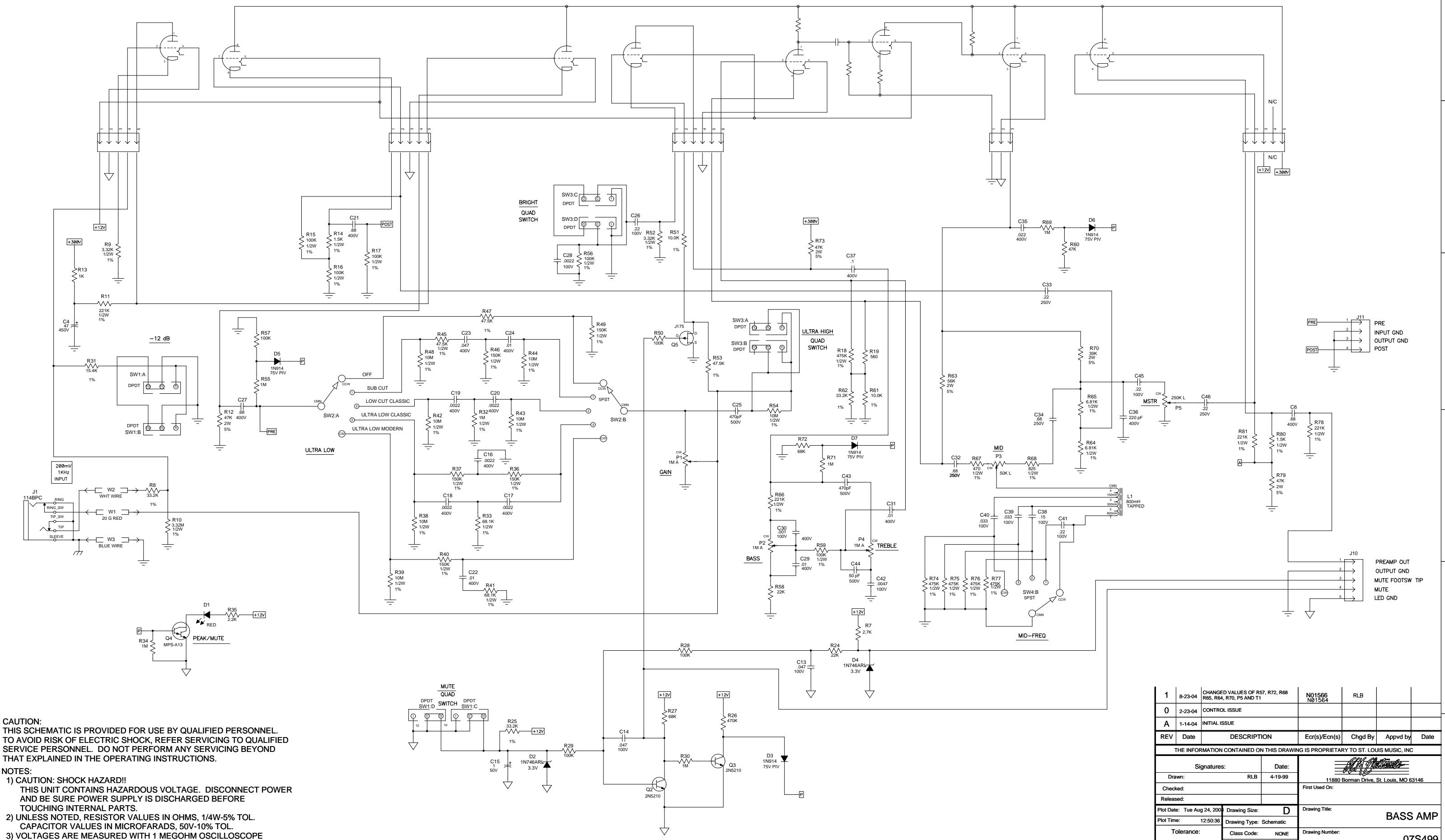


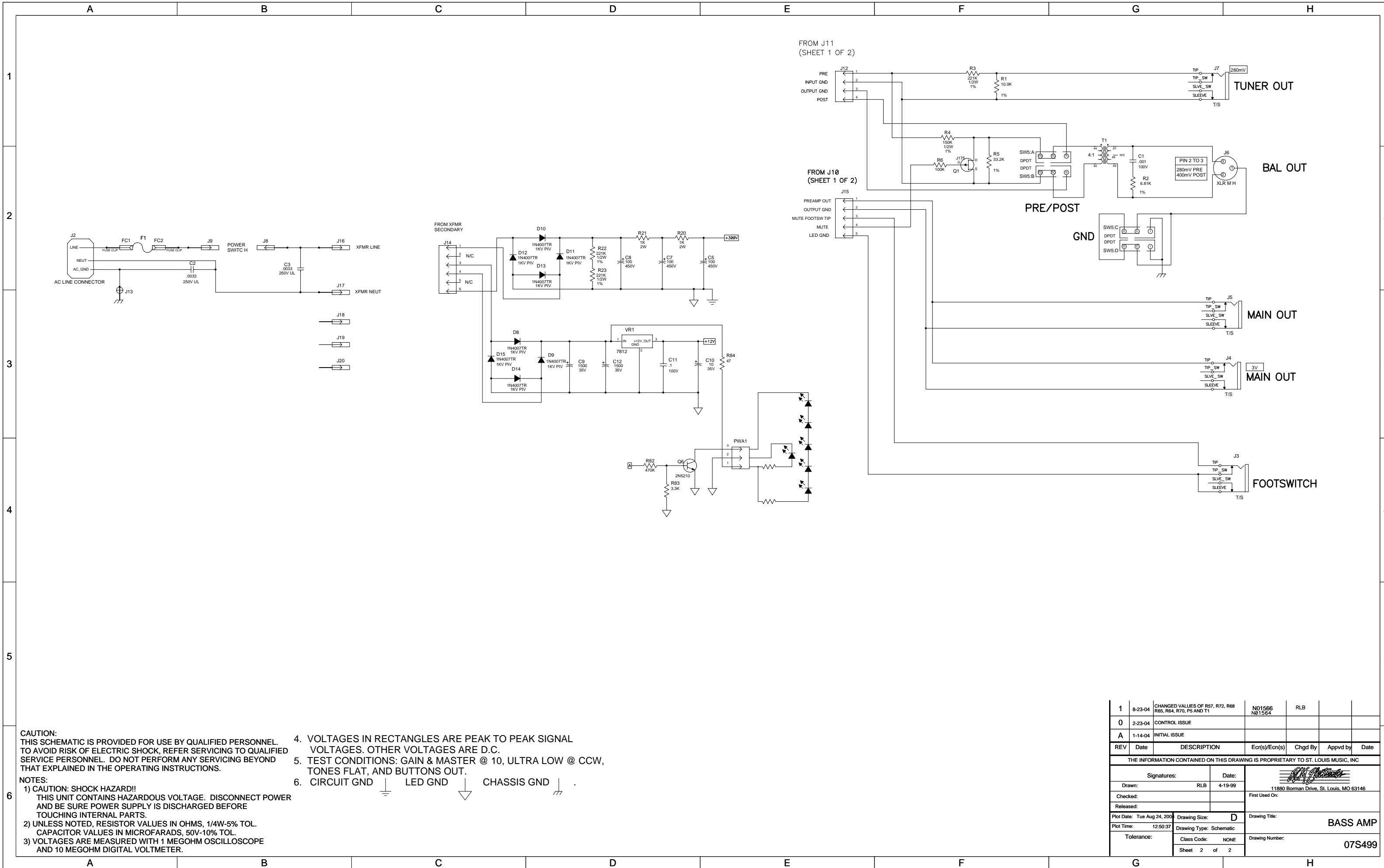
TUBE BOARD



**CAUTION:**  
THIS SCHEMATIC IS PROVIDED FOR USE BY QUALIFIED PERSONNEL. TO AVOID RISK OF ELECTRIC SHOCK, REFER SERVICING TO QUALIFIED SERVICE PERSONNEL. DO NOT PERFORM ANY SERVICING BEYOND THAT EXPLAINED IN THE OPERATING INSTRUCTIONS.

**NOTES:**  
1) CAUTION: SHOCK HAZARD!! THIS UNIT CONTAINS HAZARDOUS VOLTAGE. DISCONNECT POWER AND BE SURE POWER SUPPLY IS DISCHARGED BEFORE TOUCHING INTERNAL PARTS.  
2) UNLESS NOTED, RESISTOR VALUES IN OHMS, 1/4W-5% TOL. CAPACITOR VALUES IN MICROFARADS, 50V-10% TOL.  
3) VOLTAGES ARE MEASURED WITH 1 MEGOHM OSCILLOSCOPE AND 10 MEGOHM DIGITAL VOLTMETER.

1	8-23-04	CHANGED VALUES OF R57, R72, R68, R65, R64, R70, P5 AND T1	N01566 N01564	RLB		
0	2-23-04	CONTROL ISSUE				
A	1-14-04	INITIAL ISSUE				
REV	Date	DESCRIPTION	Ecr(s)/Ecn(s)	Chgd By	Appvd by	Date
THE INFORMATION CONTAINED ON THIS DRAWING IS PROPRIETARY TO ST. LOUIS MUSIC, INC						
Signatures:			Date:		 11880 Borman Drive, St. Louis, MO 63146	
Drawn: RLB			4-19-99			
Checked:			Released:		First Used On:	
Plot Date: Tue Aug 24, 2004			Drawing Size: D		Drawing Title:	
Plot Time: 12:50:36			Drawing Type: Schematic		<b>BASS AMP</b> 07S499	
Tolerance:			Class Code: NONE			
Sheet 1 of 2						



**CAUTION:**  
THIS SCHEMATIC IS PROVIDED FOR USE BY QUALIFIED PERSONNEL. TO AVOID RISK OF ELECTRIC SHOCK, REFER SERVICING TO QUALIFIED SERVICE PERSONNEL. DO NOT PERFORM ANY SERVICING BEYOND THAT EXPLAINED IN THE OPERATING INSTRUCTIONS.

- NOTES:**
- 1) CAUTION: SHOCK HAZARD!! THIS UNIT CONTAINS HAZARDOUS VOLTAGE. DISCONNECT POWER AND BE SURE POWER SUPPLY IS DISCHARGED BEFORE TOUCHING INTERNAL PARTS.
  - 2) UNLESS NOTED, RESISTOR VALUES IN OHMS, 1/4W-5% TOL. CAPACITOR VALUES IN MICROFARADS, 50V-10% TOL.
  - 3) VOLTAGES ARE MEASURED WITH 1 MEGOHM OSCILLOSCOPE AND 10 MEGOHM DIGITAL VOLTMETER.

4. VOLTAGES IN RECTANGLES ARE PEAK TO PEAK SIGNAL VOLTAGES. OTHER VOLTAGES ARE D.C.
5. TEST CONDITIONS: GAIN & MASTER @ 10, ULTRA LOW @ CCW, TONES FLAT, AND BUTTONS OUT.
6. CIRCUIT GND LED GND CHASSIS GND

1	8-23-04	CHANGED VALUES OF R57, R72, R68, R65, R64, R70, P5 AND T1	N01566 N01564	RLB		
0	2-23-04	CONTROL ISSUE				
A	1-14-04	INITIAL ISSUE				
REV	Date	DESCRIPTION	Ecr(s)/Ecn(s)	Chgd By	Appvd by	Date
THE INFORMATION CONTAINED ON THIS DRAWING IS PROPRIETARY TO ST. LOUIS MUSIC, INC						
Signatures:			Date:			
Drawn: RLB			Date: 4-19-99		11880 Borman Drive, St. Louis, MO 63146	
Checked:			Released:		First Used On:	
Plot Date: Tue Aug 24, 2004		Drawing Size: D		Drawing Title: BASS AMP		
Plot Time: 12:50:37		Drawing Type: Schematic		Drawing Number: 07S499		
Tolerance:		Class Code: NONE		Sheet 2 of 2		