

REF. DES.	QTY	VALUE
F1	1	10K
F2	1	10K
F3	1	10K
F4	1	10K
T1	1	1N4148

REF DES NOT USED:  
 C85,C86,D12,D13,J10,J17,J20,JW1-6,  
 JW100,R43,R56,R59, R63,R133,R134,  
 R135,R143,U5

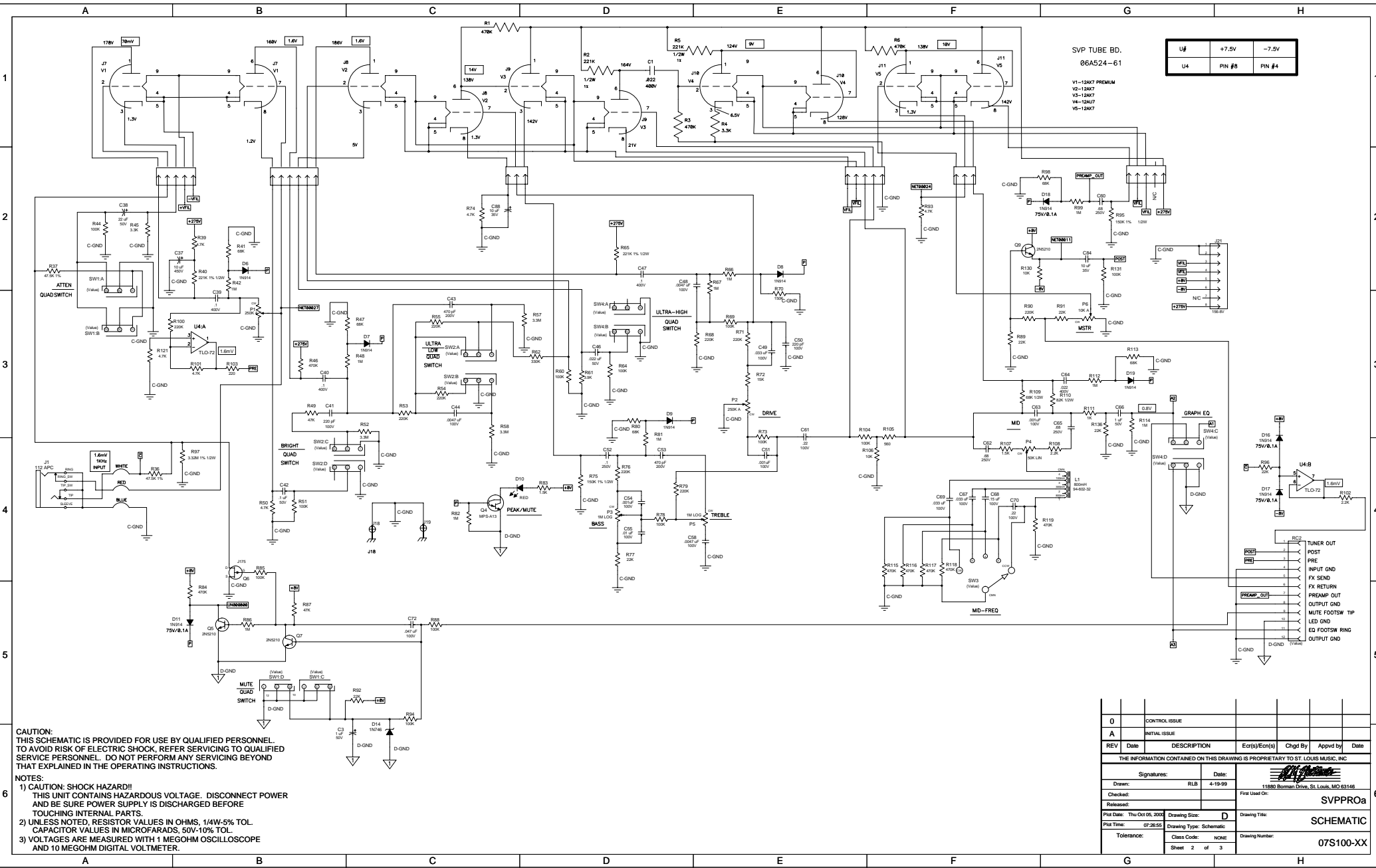
LAST USED REF DES:  
 C88,D31,F2,J21,JW109,L1,P16,Q9,  
 R146,RC2,SW6,T2,U7,W3,VR2,X6

CAUTION:  
 THIS SCHEMATIC IS PROVIDED FOR USE BY QUALIFIED PERSONNEL  
 TO AVOID RISK OF ELECTRIC SHOCK, REFER SERVICING TO QUALIFIED  
 SERVICE PERSONNEL. DO NOT PERFORM ANY SERVICING BEYOND  
 THAT EXPLAINED IN THE OPERATING INSTRUCTIONS.

NOTES:  
 1) CAUTION: SHOCK HAZARD!!  
 THIS UNIT CONTAINS HAZARDOUS VOLTAGE. DISCONNECT POWER  
 AND BE SURE POWER SUPPLY IS DISCHARGED BEFORE  
 TOUCHING INTERNAL PARTS.  
 2) UNLESS NOTED, RESISTOR VALUES IN OHMS, 1/4W-5% TOL.  
 CAPACITOR VALUES IN MICROFARADS, 50V-10% TOL.  
 3) VOLTAGES ARE MEASURED WITH 1 MEGOHM OSCILLOSCOPE  
 AND 10 MEGOHM DIGITAL VOLTMETER.

- VOLTAGES IN RECTANGLES ARE PEAK TO PEAK SIGNAL VOLTAGES. OTHER VOLTAGES ARE D.C.
- TEST CONDITIONS: GAIN, MASTER & LEVEL @ 10, DRIVE @ 0, TONES FLAT, AND BUTTONS OUT.
- CIRCUIT GND LED GND CHASSIS GND

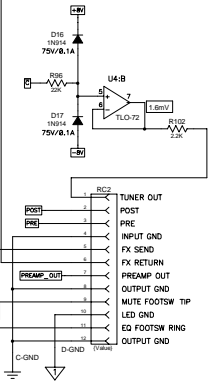
REV	Date	DESCRIPTION	Ecr(s)/Ecrn(a)	Chgd By	Appvd by	Date
0		CONTROL ISSUE				
A		INITIAL ISSUE				
THE INFORMATION CONTAINED ON THIS DRAWING IS PROPRIETARY TO ST. LOUIS MUSIC, INC.						
Signatures:		Date:		11880 Roman Drive, St. Louis, MO 63146		
Drawn: RLB		4-19-99		First Used On: SVPPROa		
Checked:						
Released:						
Prt Date: The Oct 05, 2001		Drawing Size: D		Drawing Title: SCHEMATIC		
Prt Time: 07:26:51		Drawing Type: Schematic		Class Code: NONE		
Tolerance:				Drawing Number: 07S100-XX		
Sheet 1 of 3						



SVP TUBE BD.  
06A524-61

V1-12AX7 PREMIUM  
V2-12AU6  
V3-12AU6  
V4-12AU6  
V5-12AX7

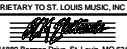
U#	+7.5V	-7.5V
U4	PIN #8	PIN #4

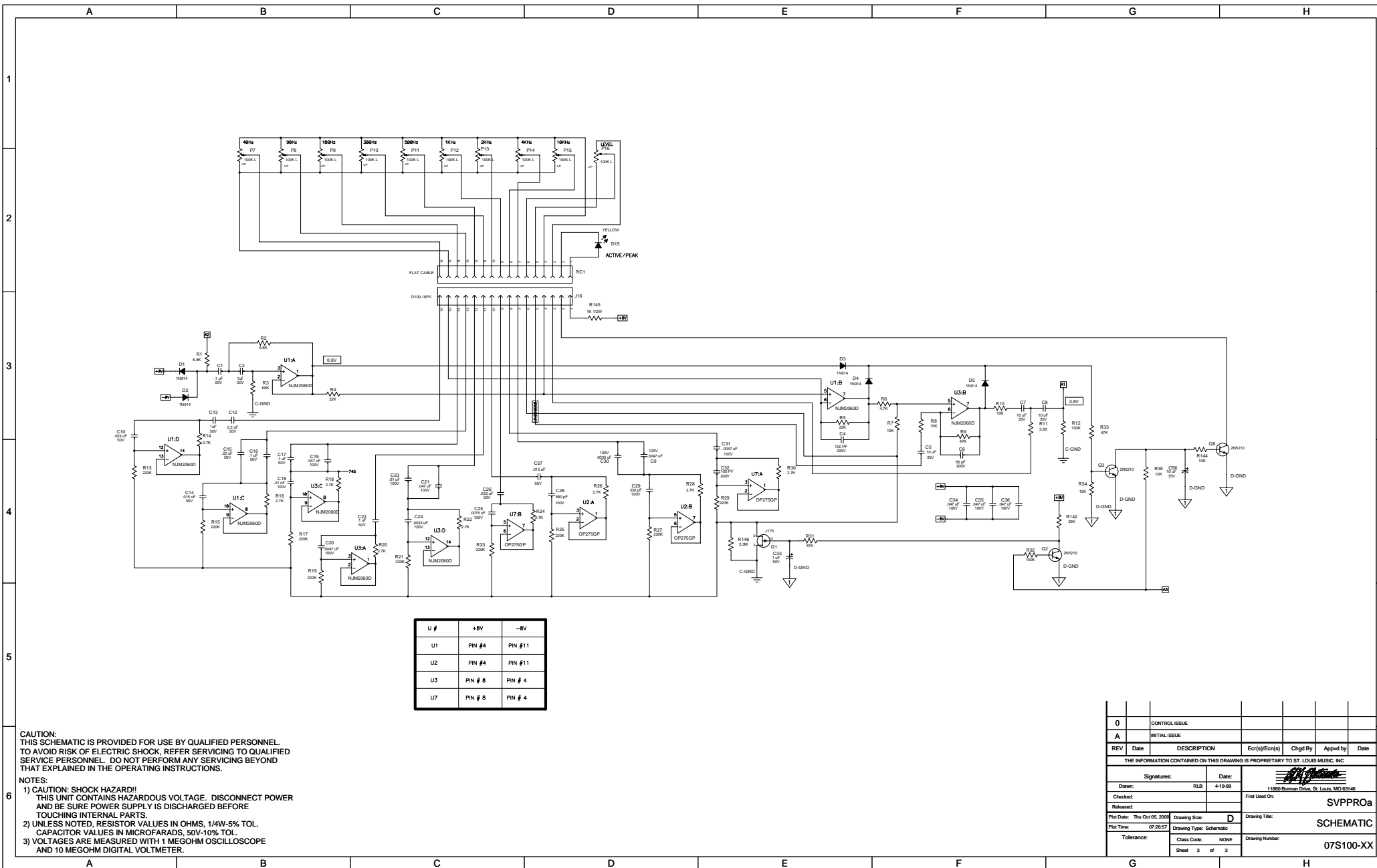


**CAUTION:**  
THIS SCHEMATIC IS PROVIDED FOR USE BY QUALIFIED PERSONNEL.  
TO AVOID RISK OF ELECTRIC SHOCK, REFER SERVICING TO QUALIFIED  
SERVICE PERSONNEL. DO NOT PERFORM ANY SERVICING BEYOND  
THAT EXPLAINED IN THE OPERATING INSTRUCTIONS.

**NOTES:**

- 1) CAUTION: SHOCK HAZARD!!  
THIS UNIT CONTAINS HAZARDOUS VOLTAGE. DISCONNECT POWER  
AND BE SURE POWER SUPPLY IS DISCHARGED BEFORE  
TOUCHING INTERNAL PARTS.
- 2) UNLESS NOTED, RESISTOR VALUES IN OHMS, 1/4W-5% TOL.  
CAPACITOR VALUES IN MICROFARADS, 50V-10% TOL.
- 3) VOLTAGES ARE MEASURED WITH 1 MEGOHM OSCILLOSCOPE  
AND 10 MEGOHM DIGITAL VOLTMETER.

0	CONTROL ISSUE				
A	INITIAL ISSUE				
REV	Date	DESCRIPTION	Ecn(s)/Ecn(s)	Chgd By	Appvd by
THE INFORMATION CONTAINED ON THIS DRAWING IS PROPRIETARY TO ST. LOUIS MUSIC, INC.					
Signatures:		Date:		 11880 Borman Drive, St. Louis, MO 63146	
Drawn:	RLB	4-19-99	First Used On:		
Checked:			SVPPROa		
Released:					
Plot Date:	Thu Oct 06, 2000	Drawing Size:	D	Drawing Title:	
Plot Time:	07:26:55	Drawing Type:	Schematic	SCHEMATIC	
Tolerance:		Class Code:	NGNE	Drawing Number:	
				07S100-XX	
				Sheet 2 of 3	



U #	+8V	-8V
U1	PIN #4	PIN #11
U2	PIN #4	PIN #11
U3	PIN # 8	PIN # 4
U7	PIN # 8	PIN # 4

**CAUTION:**  
THIS SCHEMATIC IS PROVIDED FOR USE BY QUALIFIED PERSONNEL TO AVOID RISK OF ELECTRIC SHOCK. REFER SERVICING TO QUALIFIED SERVICE PERSONNEL. DO NOT PERFORM ANY SERVICING BEYOND THAT EXPLAINED IN THE OPERATING INSTRUCTIONS.

- NOTES:**
- 1) CAUTION: SHOCK HAZARD!! THIS UNIT CONTAINS HAZARDOUS VOLTAGE. DISCONNECT POWER AND BE SURE POWER SUPPLY IS DISCHARGED BEFORE TOUCHING INTERNAL PARTS.
  - 2) UNLESS NOTED, RESISTOR VALUES IN OHMS, 1/4W-5% TOL. CAPACITOR VALUES IN MICROFARADS, 50V-10% TOL.
  - 3) VOLTAGES ARE MEASURED WITH 1 MEGOHM OSCILLOSCOPE AND 10 MEGOHM DIGITAL VOLTMETER.

REV	Date	DESCRIPTION	Ecr(s)/Ecn(s)	Chgd By	Appvd by	Date
0		CONTROL ISSUE				
A		INITIAL ISSUE				

THE INFORMATION CONTAINED ON THIS DRAWING IS PROPRIETARY TO ST. LOUIS MUSIC, INC.

Drawn:	RLB	Date:	4-19-99
Checked:		Released:	
Per Date:	Thu Oct 05, 2000	Drawing Size:	D
Per Time:	07:26:57	Drawing Type:	Schematic
Tolerance:		Class Code:	NONE
		Sheet:	3 of 3

First Used On: SVPPROa  
18880 Borman Drive, St. Louis, MO 63146  
SCHEMATIC  
07S100-XX