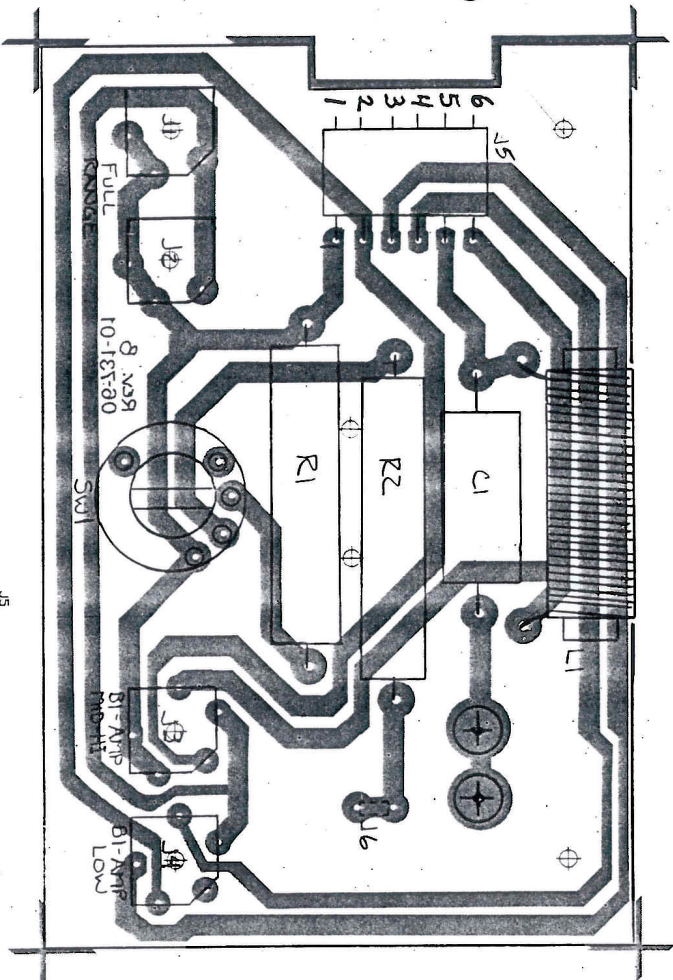


PIN#	DESIGNATION
6	GROUND (HORN)
5	POS. (HORN)
4	GROUND (15")
3	POS. (15")
2	GROUND (10")
1	POS. (10")

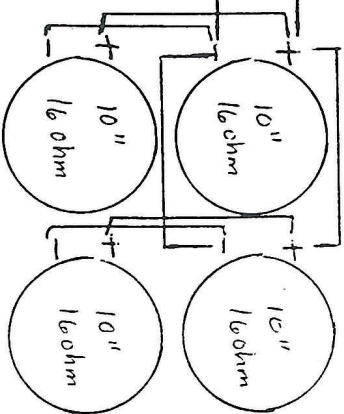
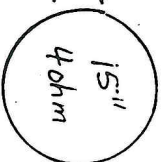
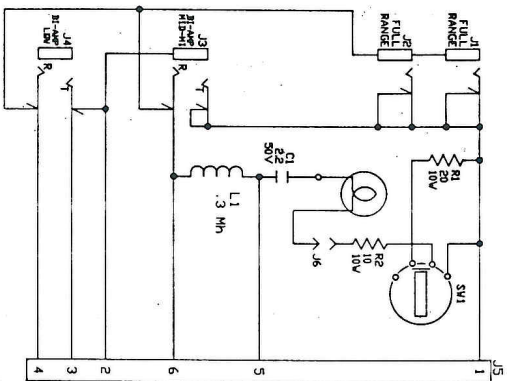


ASSEMBLY PART NUMBER 07-731-01

SVT-1540RE CROSSOVER

DESIGNATOR	DESCRIPTION	PART NUMBER
R1	20 OHM/10 WATT	78-200-10
R2	10 OHM/10 WATT	78-100-10
C1	10X REB WF	12-255-82
J1	AXIAL 10X 100V SILMI	39-012-01
J2	118PFC JACK	39-114-02
J3	118PFC JACK	39-114-02
J4	118PFC JACK	39-114-02
J5	118PFC JACK	39-114-02
J6	118PFC JACK	39-114-02
L1	.3 MILLIHENRY COIL	94-131-01
SW1	NO MOUNTING STRIP	90-103-01
	R-103 MOUNTING STRIP	90-103-01
	R10307 ANODE D R5012	

**NOTE: IN FULL RANGE MODE, THE 15" SPEAKER IS WIRED IN SERIES WITH THE (4) 10" SPEAKERS THRU THE CROSSOVER. IF THE 15" SPEAKER IS "OPEN", THERE WILL BE NO OUTPUT FROM THE 15" OR THE (4) 10" SPEAKERS. IN BI-AMP MODE THESE SPEAKERS ARE PARALLEL WITH THE CORRESPONDING JACKS.



ASSY PART NO. 07-731-01

TOLERANCES UNLESS OTHERWISE SPECIFIED		REVISIONS	
NO	DATE	BY	REASON
1			
2			
3			
4			

BLM ELECTRONICS
1400 FERNBURN, ST. LOUIS, MO 63133

SVT-1540 RE
DESIGN OVER BOARD RETRAN.
DATE 8/23/89
DRAWING NO. 07-731-01