

DESIGNATOR DESCRIPTION P/N

R1	1M 1/2W 1%	77-105-02
R2	100K 1/2W 1%	77-104-02
R3	68.1K 1/2W 1%	77-683-02
R4	2.74K 1/2W 1%	77-272-02
R5	221K 1/2W 1%	77-224-02
R6	2.74K 1/2W 1%	77-272-02
R7	100K 1/2W 1%	77-104-02
R8	475K 1/2W 1%	77-474-02
R9	10K 1/2W 1%	77-103-02
R11	100K 1/2W 1%	77-104-02
R12	10K 1/2W 1%	77-103-02
R13	475K 1/2W 1%	77-474-02
R14	475K 1/2W 1%	77-474-02
R15	100K 1/2W 1%	77-104-02
R16	825 1/2W 1%	77-821-02
R17	100K 1/2W 1%	77-104-02
R18	33.2K 1/2W 1%	77-333-02
R19	221K 1/2W 1%	77-224-02
R20	221K 1/2W 1%	77-224-02
R22	475K 1/2W 1%	77-474-02
R24	56K 2W	78-563-01
R25	56K 2W	78-563-01

R26	4.7K 2W	78-472-01
R27	4.7K 2W	78-472-01
R28	4.7K 2W	78-472-01
R29	4.7K 2W	78-472-01
R30	47.5K 1/2W 1%	77-473-02
R31	47.5K 1/2W 1%	77-473-02
R32	1M 1/2W 1%	77-105-02
R33	1K 1/2W 1%	77-102-02
R34	1.5K 1/2W 1%	77-152-02
R35	10K 1/2W 1%	77-103-02
R36	6.81K 1/2W 1%	77-682-02
R37	15K 1/2W 1%	77-153-02
R38	47.5K 1/2W 1%	77-473-02
R39	2.21K 1/2W 1%	77-222-02
R40	50 OHM 5 WATT	78-500-05
R41	50 OHM 5 WATT	78-500-05
R42	2.21K 1/2W 1%	77-222-02
R43	2.21K 1/2W 1%	77-222-02
R44	221K 1/2W 1%	77-224-02
R45	221K 1/2W 1%	77-224-02

C3	.68 TANT	12-684-10
C5	.022/400V	10-223-10
C6	.68 TANT	12-684-10
C8	.022/400V	10-223-10
C9	470pF/500V DISC	10-471-52
C10	470pF/500V DISC	10-471-52
C11	.022/400V	10-223-10
C12	.022/400V	10-223-10
C14	NOT USED	
C15	100/450V SNAP-IN	12-107-93
C16	100/450V SNAP-IN	12-107-93
C17	47uF/450V	12-476-42
C18	47uF/450V	12-476-42
C19	47uF/450V	12-476-42
C20	47uF/450V	12-476-42
C21	47uF/450V	12-476-42
C22	47uF/450V	12-476-42
C23	.022/400V	10-223-10
C24	22uF/16V NP	12-226-82
C26	470pF/100V	10A471-11
C27	470pF/100V	10A471-11
C28	10/100V	12-106-10
C29	10/100V	12-106-10
C30	1000/35V	12-108-32
C31	47 MFD/35V	12-476-32
C32	1000/35V	12-108-32
C33	47 MFD/35V	12-476-32
C34	.1/400V	10-104-10

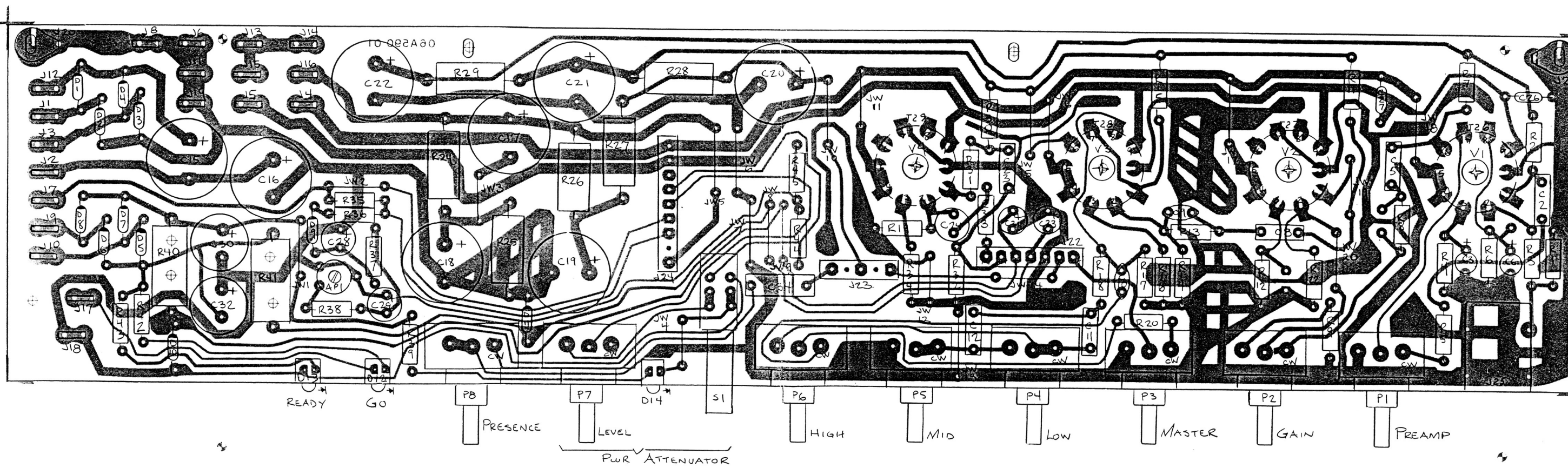
D1	1N4007	21A407-01
D2	1N4007	21A407-01
D3	1N4007	21A407-01
D4	1N4007	21A407-01
D5	1N4007	21A402-01
D6	1N4002	21A402-01
D7	1N4002	21A402-01
D8	1N4002	21A402-01
D9	1N4002	21A402-01
D10	1N4744	21A444-01
D11	1N4744	21A444-01
D12	GREEN LED ASSY	21-502-01
D13	RED LED ASSY	21-501-01
D14	YELLOW LED ASSY	21-503-01

J1	836TP .25" FST TB	17-836-01
J2	836TP .25" FST TB	17-836-01
J3	836TP .25" FST TB	17-836-01
J4	836TP .25" FST TB	17-836-01
J5	836TP .25" FST TB	17-836-01
J6	836TP .25" FST TB	17-836-01
J7	836TP .25" FST TB	17-836-01
J8	836TP .25" FST TB	17-836-01
J9	836TP .25" FST TB	17-836-01
J10	836TP .25" FST TB	17-836-01
J11	836TP .25" FST TB	17-836-01
J12	836TP .25" FST TB	17-836-01
J13	836TP .25" FST TB	17-836-01
J14	836TP .25" FST TB	17-836-01
J15	836TP .25" FST TB	17-836-01
J16	836TP .25" FST TB	17-836-01
J17	836TP .25" FST TB	17-836-01
J18	836TP .25" FST TB	17-836-01
J19	836TP .25" FST TB	17-836-01
J20	#6 GROUND LUG	17-500-01
J21	#6 GROUND LUG	17-500-01
J22	MFSS156-7 HEADER	17-310-07
J23	MFSS156-5-D HDR	17-310-05
J24	9 PIN HEADER	39-119-01
J25	CLIFF MONO JACK	17-450-09
J26	9-PIN TUBE SOCKET	17-450-09
J27	9-PIN TUBE SOCKET	17-450-09
J28	9-PIN TUBE SOCKET	17-450-09
J29	9-PIN TUBE SOCKET	17-450-09

JW1-20	JUMPER	76-000-05
C2	.0022	10-222-10

P1	1MA POT	70-105-10
P2	1MA POT	70-105-10
P3	1MA POT	70-105-10
P4	1MA POT	70-105-10
P5	25KA POT	70-253-10
P6	25KA POT	70-254-10
P7	25KA POT	70-254-10
P8	25KA POT	70-253-12
S1	DPDT SWITCH/WHT CAP	88-301-03
AP1	25K TRIMPOT	71-253-25

SCREW1	#6 SCREW	30-650-52
SCREW2	#6 SCREW	30-650-52
SCREW3	#6 SCREW	30-650-52
SCREW4	#6 SCREW	30-650-52
PC1	PC BOARD	06A590-01



TOLERANCES (EXCEPT AS NOTED)	REVISIONS			VL-501, VL-1001 MAIN BD. ASSY # 07-590-01		
	NO	DATE	BY			
DECIMAL	1					
FRACTIONAL	2					
ANGULAR	3					
	4					
	5					

DRAWN BY: RGM
 CHECKED: RGM
 DATE: 5-1-91
 SCALE: 2x
 MATERIAL: 07P590-01