

# ***Ampex***



**Owner's Manual**



## Important Safety Instructions

1. Read, follow, and keep these instructions. Heed all warnings.
2. This speaker is capable of producing high sound pressure levels that may cause permanent hearing damage. User caution is advised and ear protection is recommended during use.
3. This speaker is designed for use on a sturdy, level surface. Whenever stacking speaker cabinets, do not stack more than two high.
4. Speaker cables are a tripping hazard and must be routed out of traffic areas and away from any possible accidental contact.
5. Do not expose this speaker to rain or moisture. Do not place liquid filled containers on this speaker. Clean only with a dry cloth.
6. Repair or service of this speaker should be performed only by qualified personnel.

## Introduction

**Congratulations!** You are now the proud owner of an Ampeg SVT 210AV speaker cabinet. This cabinet has been designed to follow the classical good looks and features of our renowned SVT-Series cabinets.

The SVT 210AV speaker cabinet is designed as an ideal companion to the Micro-VR amplifier head, available separately.

Like all Ampeg products, your SVT 210AV cabinet is designed by musicians and built using only the best of components. Each cabinet is tested to confirm that it meets our specifications, and we believe that this cabinet is the absolute best that it can be.

In order to get the most out of your new cabinet, please read this manual before you begin playing.

And **thank you** for choosing Ampeg.

Here are some of the features packed into your new Ampeg SVT 210AV speaker cabinet:

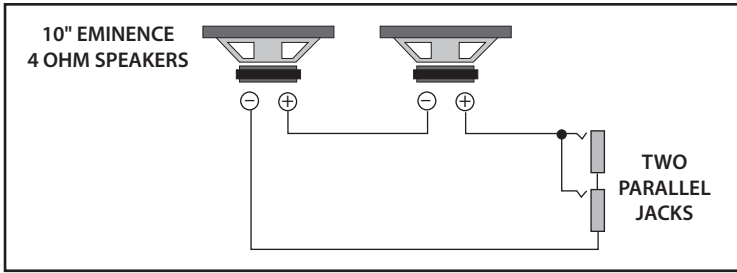
- Detailed 1970s-era SVT series appearance
- Designed as a stack with the Micro-VR amplifier (available separately)
- Foot cups on the top panel allow secure stacking of a Micro-VR amplifier or up to four empty shot glasses.
- Two ten-inch Eminence speakers
- Two 1/4" TS parallel input and output jacks
- Nominal impedance 8 ohms
- Power handling 200 W RMS
- Stylish top handle.



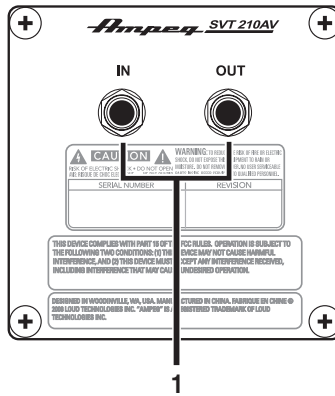
**Micro-VR and  
SVT 210AV  
Stack**



## System Block Diagram

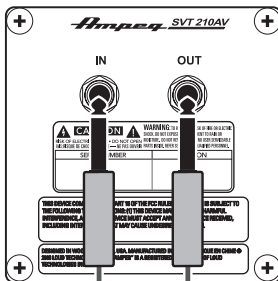


## Rear Panel Connector Plate

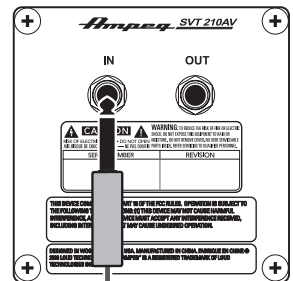


- 1/4" TS Input and Output Jacks:** Connect the speaker-level output of your amplifier (rated up to 200W into 8 ohms) to the input jack using good quality (non-shielded) speaker cable. *Never use (shielded) instrument cable to connect speakers to an amplifier.*

You can use the output jack to connect a second speaker cabinet in parallel. This will present a total load of 4 ohms to the amplifier (maximum power input = 400 watts rms into 4 ohms).



From Power Amplifier





## SVT 210AV TECHNICAL SPECIFICATIONS

Impedance	8 ohms
Power Rating	200 W RMS
Cabinet Construction	Birch plywood
Speaker Specs	Eminence Speakers 2 x 10"
Inputs	2 x 1/4" parallel jacks
Size (H x W x D)	25.2 in/640 mm (including feet and handle) x 13.0 in/330 mm x 11.0 in/280 mm
Weight	26.3 lb/11.9 kg

**The SVT 210AV cabinet is covered with a durable fabric-backed vinyl material. Clean with a dry lint-free cloth. Never spray cleaning agents onto the cabinet. Avoid abrasive cleansers which would damage the finish.**

*Ampeg continually develops new products, and improves upon existing ones. For this reason, the specifications and information in this manual are subject to change without notice.*

*"Ampeg" is a registered trademark of Yamaha Guitar Group, Inc. All other brand names mentioned are trademarks or registered trademarks of their respective holders and are hereby acknowledged.*

## Service Information

If you are having a problem with your SVT 210AV cabinet, you can go to our website ([www.ampeg.com](http://www.ampeg.com)) and click on Support for service information, or call 1-818-575-3600 during normal business hours. If you are outside of the U.S., contact your local distributor for technical support and service.



**Correct disposal of this product:** This symbol indicates that this product should not be disposed of with your household waste, according to the WEEE directive (2002/96/EC) and your national law. This product should be handed over to an authorized collection site for recycling waste electrical and electronic equipment (EEE). Improper handling of this type of waste could have a possible negative impact on the environment and human health due to potentially hazardous substances that are generally associated with EEE. At the same time, your cooperation in the correct disposal of this product will contribute to the effective usage of natural resources. For more information about where you can drop off your waste equipment for recycling, please contact your local city office, waste authority, or your household waste disposal service.

[www.ampeg.com](http://www.ampeg.com)

©2018 Yamaha Guitar Group Inc.

26580 Agoura Road • Calabasas, CA 91302-1921

Part No. 0031573 Rev. B 07/18

