

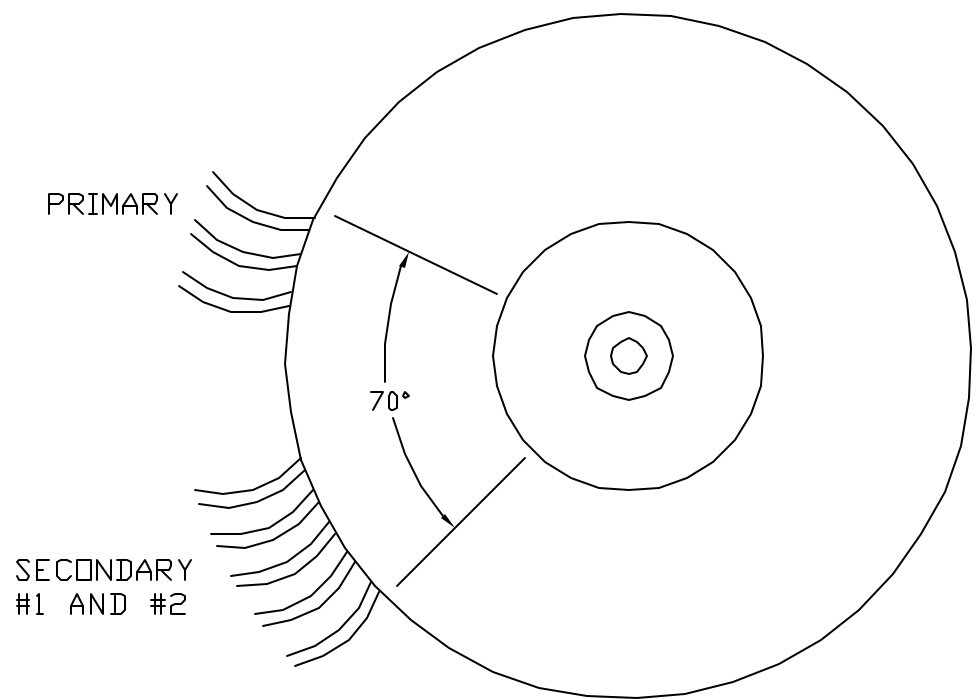
| Lead Wire Specifications | | | | | |
|--------------------------|--------------------------|---------|------------|---------|---------------------------------------|
| Item | Description | Color | AWG (Gage) | Length | Termination |
| 1 | PRIMARY #1, 120V | BLACK | 18 | 9.0 in. | .250x.032 FULLY INSULATED FEMALE TABS |
| 2 | PRIMARY #1, 110V | BLK/WHT | 18 | 9.0 in. | .250x.032 FULLY INSULATED FEMALE TABS |
| 3 | PRIMARY #1, 100V | BLUE | 18 | 9.0 in. | .250x.032 FULLY INSULATED FEMALE TABS |
| 4 | PRIMARY #1, N | WHITE | 18 | 9.0 in. | .250x.032 FULLY INSULATED FEMALE TABS |
| 5 | PRIMARY #2, 120V | BROWN | 18 | 9.0 in. | .250x.032 FULLY INSULATED FEMALE TABS |
| 6 | PRIMARY #2, 100V | GRAY | 18 | 9.0 in. | .250x.032 FULLY INSULATED FEMALE TABS |
| 7 | PRIMARY #2, N | PURPLE | 18 | 9.0 in. | .250x.032 FULLY INSULATED FEMALE TABS |
| 8 | SECONDARY #3 | RED | 18 | 6.0 in. | .250x.032 FULLY INSULATED FEMALE TABS |
| 9 | SECONDARY #3, Center Tap | GREEN | 18 | 6.0 in. | .250x.032 FULLY INSULATED FEMALE TABS |
| 10 | SECONDARY #3, GND | RED | 18 | 6.0 in. | .250x.032 FULLY INSULATED FEMALE TABS |

| MATERIALS LIST | | | | |
|----------------|-------------------------------|---|---|----------------------------|
| Item | Description | Specification | Supplier | UL File |
| A | Core | Thickness: 0.2-0.3mm, O.D.: 119mm, I.D.: 63.5mm, Height: 50mm | Nippon Steel Co. Kawasaki Steel Corp. | na |
| B | End Caps | Nylon Sheet - primary windings to core insulator, Dimensions: O.D.: 119mm, I.D.: 63mm | EI Dupont DeMours #N66 Tah Ton Nan Industrial #NG6 | E41935(M) E100014(S) |
| C | Primary Windings | 1.0mm diameter solid copper, 130 degree C | Padfic Electric Wire & Cable Co. Ta Ya Electric Wire & Cable Co. | E84081(S) E84201(S) |
| D | Insulator Tape | Primary Lead & Primary Lead to Thermal Device | Cat.#44: 0.14mm thick Cat.#1350: 0.06mm thick | E17385(N) |
| E | Thermal Device | Primary Winding Located, 110 degree c | Thermik Geratebau GMBH, Type S01 | E54296(M) |
| F | Insulator Wrap | Primary to Secondary Insulator Wrap, Mylar 0.03mm thick | Dupont DeMours & Co. Toray Industries Inc., Film Div. | E93687(R) E86511(M) |
| G | Secondary Windings | Diameter: 0.35, 0.37, & 1.5mm Solid Copper Wire, 130 degree C | Padfic Electric Wire & Cable Co. Ta Ya Electric Wire & Cable Co. | E84081(S) E84201(S) |
| H | Insulation Wrap | Mylar Film, 2 layers, 0.1mm min. thickness | Dupont DeMours & Co. Toray Industries Inc., Film Div. | E93687(R) E86511(M) |
| J | Insulation Mounting Pad | Silicon, 120mm total dia., 2.5mm thick, Center hole dia: 8mm min, 16mm max. | Fu-Da Good Speed Industry Co. | E153203 |
| K | Epoxy | Center Filler, Type: 9001A & 9001B | Shaw Huow Enterprise Co. | E105888(S) |
| 1-10 | Primary & Secondary Lead Wire | 18 AWG & 16 AWG, 105 degree C, UL 1015 | Padfic Electric Wire & Cable Co. Ta Hong Electric Wire & Cable Co. Wonderful Wire Cable Co. | E41396 E50032 E77981 |
| 1-10 | Primary Termination | Fully Insulated .250" x 0.32" Female Tab | K S Terminals Inc. | E128651(N) |

| Specifications | | | | | |
|---|--|---------------|---------|----------------------------|---------|
| Service Type: Audio Power Amplifier Temperature Class: Class B maximum Voltage Rating: 240V primary maximum, 100 / 120 / 230 / 240 dual primary with taps Frequency: 50 / 60 Hz | | | | | |
| Compliance Notes: 1) Transformer must comply with UL 1411, UL 813, UL 6500.14.1998, and EN 60065.14.1998 standards 2) Transformer must be marked to identify manufacturer | | | | | |
| Construction Notes: 1) Low radiated field intensity is required - windings are to be wound at evenly spaced turns around the full circumference of the core 2) Magnetized current at high line (110%) supply voltage must be less than two times the magnetizing current at minimum line supply voltage 3) End Bell (metal winding cover) is to be installed over non-loaded winding | | | | | |
| Electrical Specifications: Voltage at Load | | | | | |
| Items | Description- Ref. Schematic | Minimum - | | Maximum - High Line (110%) | |
| | | Voltage | Current | Voltage | Current |
| Primary, 120V | 1 & 5 Line Hot 4 & 7 Line N | 120 Vac 60 Hz | --- | 132 Vac 60 Hz | --- |
| Primary, 100V | 3 & 6 Line Hot 4 & 7 Line N | 100 Vac 50 Hz | --- | 110 Vac 50 Hz | --- |
| Primary, 230V | 2 Line Hot, 7 Line N, 4 & 5 Shorted | 230 Vac 50 Hz | --- | 253 Vac 50 Hz | --- |
| Primary, 240 V | 1 Line Hot, 7 Line N, 4 & 5 Shorted | 240 Vac 50 Hz | --- | 264 Vac 50 Hz | --- |
| Secondary #1 | 8 & 10 Output (9 Center Tap) | 50.7 Vac | 7.2 A | 75.0 V (50% Duty Cycle) | 0.2 A |
| Note: "—" indicates data not relevant to specifications | | | | | |

94-158-40

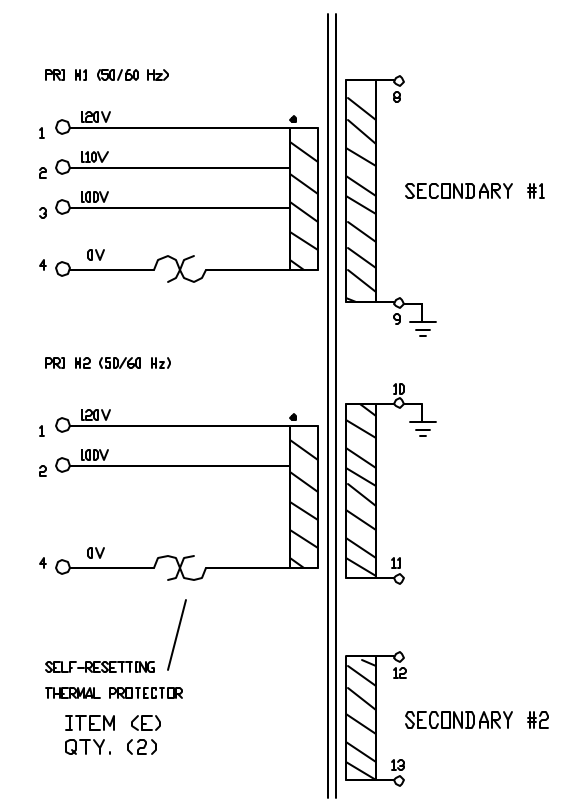
| | | | | | | |
|---|----------|-----------------|-------------|--|------------|-------|
| 1 | 9/14/05 | UPDATED TABLE | N01917 | DDG | | |
| 0 | 07/31/01 | CONTROL ISSUE | D010115 | DDA | | |
| REV: | DATE: | DESCRIPTION | ECR/ECN NO: | CHNG'D BY: | APPR'D BY: | DATE: |
| THE INFORMATION CONTAINED ON THIS DRAWING IS PROPRIETARY TO ST. LOUIS MUSIC, INC. | | | | | | |
| SIGNATURES: | | DATE: | | 11880 Borman Dr. St. Louis, Missouri 63148 | | |
| DRAWN: DDA | | 07/31/01 | | FIRST USED ON: | | |
| CHK'D: | | | | B-2 | | |
| RLS'D: | | | | DRAWING TITLE: | | |
| TOLERANCES: | | DRAWING SIZE: B | | UNIVERSAL TRANSFORMER | | |
| | | DRAWING TYPE: | | DRAWING NO.: | | |
| | | CLASS CODE: | | 94-158-XX | | |
| | | SCALE: N/A | | SHEET: 1 OF 2 | | |



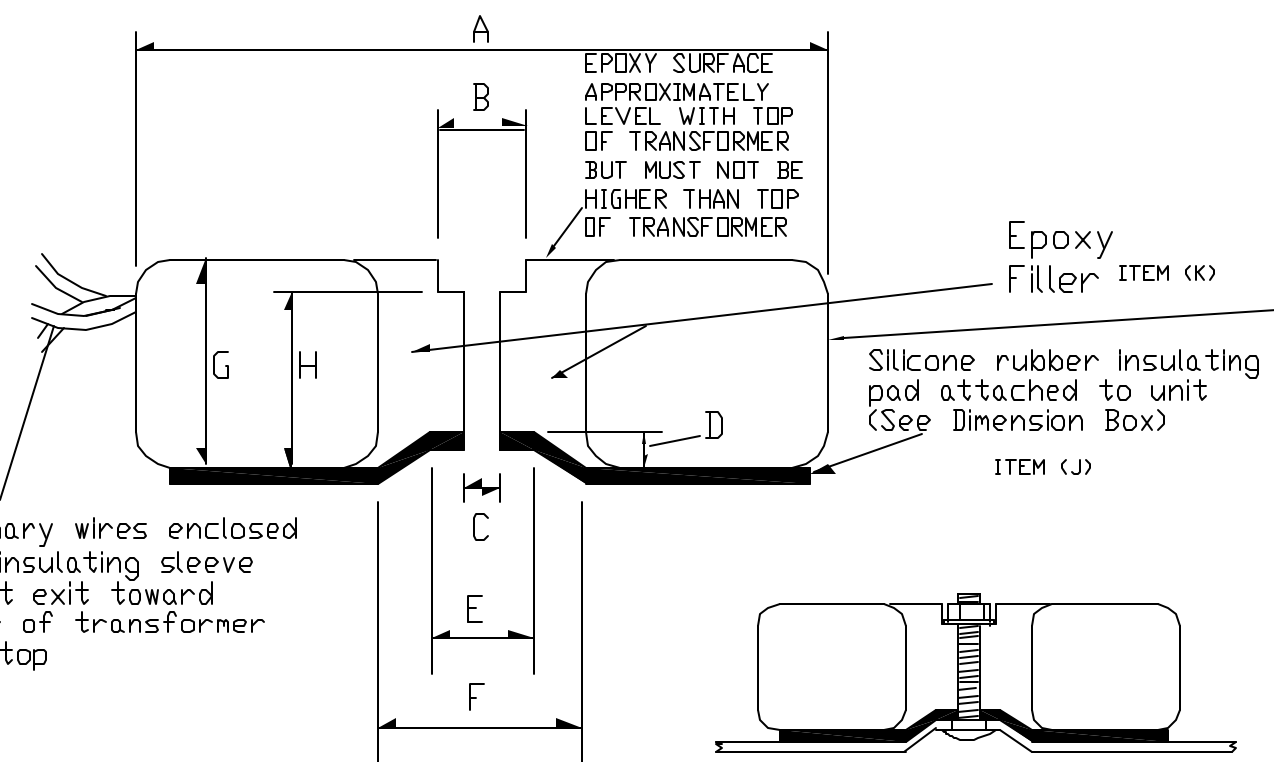
| TRANSFORMER DIMENSIONS | |
|------------------------|--------------|
| A | 170 mm max |
| B | 19mm min |
| C | 6.8mm-7.0mm |
| D | 7.5mm +/-1mm |
| E | 25.4mm min |
| F | 42mm min |
| G | 70mm max |
| H | 60mm +/-2 mm |

COMMENTS:
MOUNTING HOLE TO BE AT CENTER OF PART +/- 3MM

| SAMPLE APPROVAL NO. | VENDOR PRINT FILE NO. | SLM PARTNO. |
|---------------------|-----------------------|-------------|
| | VPF00049 | 94-158-40 |

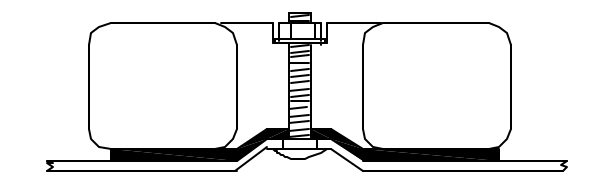


SCHMATIC



Primary wires enclosed by insulating sleeve must exit toward side of transformer at top

PART NO. LABEL TO CONTAIN SLM PART NO. & MANUFACTURES NAME



REF: Typical mounting method showing added hardware (NOT PART OF THIS ASSEMBLY)

94-158-40

| | | | | | | |
|---|---------------|---------------|-----------------------|--|------------|-------|
| 1 | 9/14/05 | UPDATED TABLE | N01917 | DDG | | |
| 0 | 07/31/01 | CONTROL ISSUE | D010115 | DDA | | |
| REV: | DATE: | DESCRIPTION | ECR/ECN NO: | CHNG'D BY: | APPR'D BY: | DATE: |
| THE INFORMATION CONTAINED ON THIS DRAWING IS PROPRIETARY TO ST. LOUIS MUSIC, INC. | | | | | | |
| SIGNATURES: | | DATE: | | 11880 Borman Dr. St. Louis, Missouri 63148 | | |
| DRAWN: | DDA | 07/31/01 | | | | |
| CHK'D: | | | FIRST USED ON: | | | |
| RLS'D: | | | B-2 | | | |
| TOLERANCES: | DRAWING SIZE: | B | DRAWING TITLE: | | | |
| | DRAWING TYPE: | | UNIVERSAL TRANSFORMER | | | |
| | CLASS CODE: | | DRAWING NO.: | | | |
| | SCALE: | N/A | SHEET: | 2 OF 2 | 94-158-XX | |