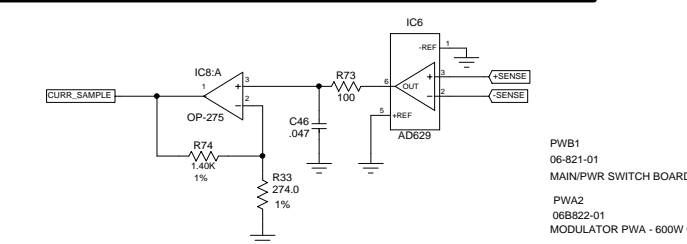


**CAUTION:**  
THIS SCHEMATIC IS PROVIDED FOR USE BY QUALIFIED PERSONNEL. TO AVOID RISK OF ELECTRIC SHOCK, REFER SERVICING TO QUALIFIED SERVICE PERSONNEL. DO NOT PERFORM ANY SERVICING BEYOND THAT EXPLAINED IN THE OPERATING INSTRUCTIONS.

- NOTES:**
- 1) CAUTION: SHOCK HAZARD!! THIS UNIT CONTAINS HAZARDOUS VOLTAGE. DISCONNECT POWER AND BE SURE POWER SUPPLY IS DISCHARGED BEFORE TOUCHING INTERNAL PARTS.
  - 2) UNLESS NOTED, RESISTOR VALUES IN OHMS, 1/10W-5% TOL. CAPACITOR VALUES IN MICROFARADS, 50V-10% TOL.
  - 3) VOLTAGES ARE MEASURED WITH 1 MEGOHM OSCILLOSCOPE AND 10 MEGOHM DIGITAL VOLTMETER.



Power Table

Ref Des	Device(Type)	Package	PRE_FILTER	+15V	-15V	-RAIL	CKT_GND	+15VB	15VB	DRIVE_12V	+12V_FLOAT
IC1	3762602_X	8DIP_3	3			3			6		6
IC2	3762602_X	8DIP_3									
IC6	37S26101_	SOIC8						7	4		
IC8	37S27501_X	SOIC8						8	4		
IC10	37S07201_DMP-8_SIOC8	DMP-8_SIOC8	8	4							
IC12	37S33901_SO14N	SO14N	3			12					
IC15	37S07201_DMP-8_SIOC8	DMP-8_SIOC8	8	4							

PWB1  
06-821-01  
MAIN/PWR SWITCH BOARD 600W CLASS D AMPLIFIER  
PWA2  
068822-01  
MODULATOR PWA - 600W CLASS D AMP

B	02/16/04	CHANGED VALUE R33	R01160	WFB		
A	12/22/03	INITIAL ISSUE				
REV	Date	DESCRIPTION	Ecr(s)/Ecrn(s)	Chgd By	Appvd by	Date
THE INFORMATION CONTAINED ON THIS DRAWING IS PROPRIETARY TO ST. LOUIS MUSIC, INC						
Signatures:		Date:		11880 Borman Drive, St. Louis, MO 63146		
Drawn: JST		01/09/02		First Used On:		
Checked:				Released:		
Released:				Plot Date: Mon Feb 16, 2004		
Plot Time: 08:54:00		Drawing Size: D		Drawing Title: 600W PWR AMP		
Tolerance:		Drawing Type: Schematic		Class Code: NONE		
Sheet 1 of 1		Drawing Number:		06S821		



PB800

©2008 LOUD Technologies Inc. All rights reserved

600 Watt Power Amplifier PCB Schematics

PAGE 1